



# Basement Finish

# Information Sheet

Electrical outlets required every 12' along walls and 6' from door openings

Insulate basement exterior walls

Install vapor retarder on/against block wall prior to framing.

Construct all walls on treated or redwood plats.

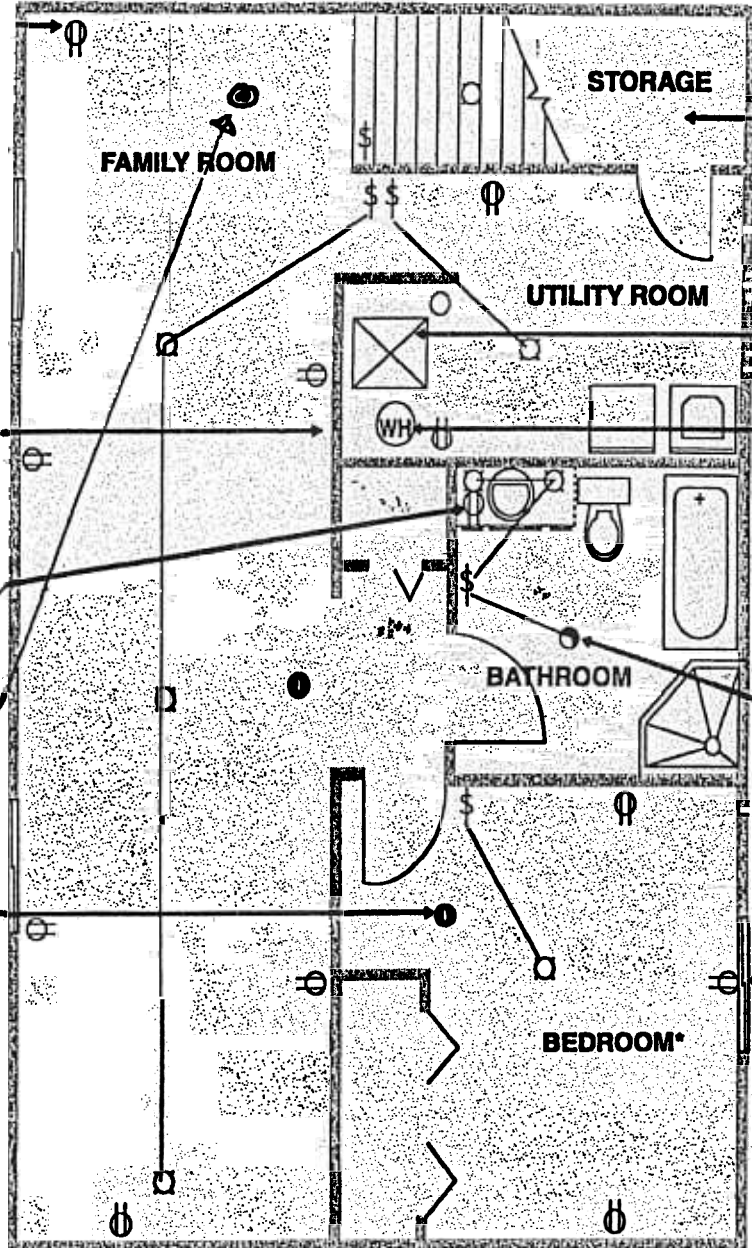
GFI outlet required in bathroom.

**Smoke detectors:** Electronically-operated detectors in new basement finish and all bedrooms. Install detectors in existing bedrooms and floors not equipped with smoke detectors.

Label uses of each room.

Minimum ceiling height is 7' with 6'6" allowed for projections such as beams and ducts.

Gas-fired furnace or water heater cannot be in a bedroom, bathroom or closet.



Protect storage under stairs on enclosed side with 1/2" gypsum board.

Provide combustion air to furnace and clear 30" working space in front of furnace.

A water heater must be able to be removed with the furnace intact.

Supply and return air is required for all habitable rooms.

A bathroom fan is required unless there is an openable window. Insulate the fan duct a minimum of 4' from the outside of the house rim.

Show window sizes. Egress window required in each bedroom. Egress size: 5.7 sq.ft. of openable area with 20" min. width and min. height of 22". Sill no more than 44" above floor.

Note: Electrical boxes/panels are NOT allowed in bathrooms or closets.

This information is a guide to the most common questions. It is not intended, nor shall it be considered, a complete set of requirements.