

APPENDIX A

TOWN OF SCHERERVILLE CURB INVENTORY

Intersection	Corner/Curb/Ramp	Status of Intersection	Priority	Date
75th Ave. / Burr Street	NW Corner	75th Ave. side ramp is bad	2	8/22/2012
75th Ave. / Foxwood Drive	NW Corner	No ramp	1	8/22/2012
75th Ave. / Foxwood Drive	NE Corner	Ramp is average	3	8/22/2012
75th Ave. / Foxwood Drive	SE Corner	75th Ave. side ramp is bad, no ramp on Foxwood Dr. side	2&1	8/22/2012
75th Ave. / Foxwood Drive	SW Corner	75th Ave. side ramp is average, no ramp on Foxwood Dr. side	3&1	8/22/2012
75th Ave. / Hawk Court	NW Corner	No ramp	1	8/22/2012
75th Ave. / Hawk Court	NE Corner	No ramp	1	8/22/2012
75th Ave. / Hawk Court	SW Corner	Ramp is Good	4	8/22/2012
75th Ave. / Hawk Court	SE Corner	Ramp is Good	4	8/22/2012
Foxwood Drive / Mount Drive	NE Corner	Ramp is average	3	8/22/2012
Foxwood Drive / Mount Drive	SE Corner	Ramp is bad	2	8/22/2012
Mount Drive / Wolf Drive	NW Corner	Ramp is bad	2	8/22/2012
Mount Drive / Wolf Drive	SW Corner	Wolf Dr. side ramp is bad, no ramp on Mount Dr. side	2&1	8/22/2012
Wolf Drive / Hanley Street	SE Corner	Hanley St. side ramp is bad, no ramp on Wolf Dr. side	2&1	8/22/2012
70th Ave. / Foxwood Drive	NW Corner	Ramp is average	3	8/22/2012
70th Ave. / Foxwood Drive	NE Corner	No Ramp	1	8/22/2012
70th Ave. / Foxwood Drive	SW Corner	Ramp is bad	2	8/22/2012
70th Ave. / Foxwood Drive	SE Corner	Ramp is bad	2	8/22/2012
70th Ave. / Hawk Drive	NW Corner	Ramp is average	3	8/22/2012
70th Ave. / Hawk Drive	NE Corner	Ramp is bad	2	8/22/2012
Hawk Drive / Gull Drive	SE Corner	Ramp is bad	2	8/22/2012
Gull Drive / Forest Ridge Drive	SW Corner	Ramp is average	3	8/22/2012
70th Ave. / Forest Ridge Drive	NW Corner	Ramp is bad	2	8/22/2012
70th Ave. / Forest Ridge Drive	NE Corner	Ramp is bad	2	8/22/2012
70th Ave. / Forest Ridge Drive	SW Corner	Ramp is average	3	8/22/2012
70th Ave. / Forest Ridge Drive	SE Corner	Ramp is bad	2	8/22/2012
Forest Ridge Drive / Quail Court	NW Corner	Ramp is bad	2	8/22/2012
Forest Ridge Drive / Quail Court	NE Corner	No ramp	1	8/22/2012
Forest Ridge Drive / Quail Court	SW Corner	Ramp is bad	2	8/22/2012
Forest Ridge Drive	NE Corner	ramp running East and West is average, ramp running north and south is bad	3&2	8/22/2012
Forest Ridge Drive	SW Corner	Ramp is average	3	8/22/2012
Forest Ridge Drive / 75th Ave.	NW Corner	Forest Ridge Dr. side ramp is bad, no ramp on 75th Ave. side	2&1	8/22/2012
Forest Ridge Drive / 75th Ave.	NE Corner	No ramp	1	8/22/2012
Starling Drive / Gull Drive	NW Corner	No ramp	1	8/22/2012
Starling Drive / Gull Drive	NE Corner	Ramp is Good	4	8/22/2012
Starling Drive / Gull Drive	SW Corner	No ramp	1	8/22/2012
Starling Drive / Gull Drive	SE Corner	Ramp is Good	4	8/22/2012
Gull Drive / Wren Drive	SW Corner	Ramp is Good	4	8/22/2012
Starling Drive / 70th Ave.	NW Corner	Ramp is average	3	8/22/2012
Starling Drive / 70th Ave.	NE Corner	Ramp is average	3	8/22/2012

Starling Drive / 70th Ave.	SW Corner	Ramp is average	3	8/22/2012
Starling Drive / 70th Ave.	SE Corner	Ramp is average	3	8/22/2012
70th Ave. / Wren Drive	NW Corner	Ramp is average	3	8/22/2012
70th Ave. / Wren Drive	SW Corner	Ramp is average	3	8/22/2012
Wren Drive / Crane Court	NW Corner	Ramp is Good	4	8/22/2012
Wren Drive / Crane Court	NE Corner	Ramp is average	3	8/22/2012
Crane Court / Dove Drive	NW Corner	Ramp is average	3	8/22/2012
Crane Court / Dove Drive	SW Corner	Ramp is bad	2	8/22/2012
Starling Drive / Teal Terrace	NW Corner	No ramp	1	8/22/2012
Starling Drive / Teal Terrace	SW Corner	No ramp	1	8/22/2012
Starling Drive / Teal Terrace	NE Corner	Ramp is good	4	8/22/2012
Starling Drive / Teal Terrace	SE Corner	Ramp is average	3	8/22/2012
Teal Terrace / Wren Drive	SW Corner	Ramp is bad	2	8/22/2012
Wren Drive / Finch Drive	NW Corner	No ramp	1	8/22/2012
Wren Drive / Finch Drive	NE Corner	Ramp is bad	2	8/22/2012
Wren Drive / Finch Drive	SW Corner	No ramp	1	8/22/2012
Wren Drive / Finch Drive	SE Corner	Ramp is bad	2	8/22/2012
Starling Drive / 72nd Ave.	NW Corner	Ramp is bad	2	8/22/2012
Starling Drive / 72nd Ave.	SE Corner	Ramp is bad	2	8/22/2012
Starling Drive / 72nd Ave.	SW Corner	Ramp is good	4	8/22/2012
Finch Drive / Mallard Lane	SW Corner	Ramp is average	3	8/22/2012
Starling Drive / 72nd Ave.		No ramps across from 7144 Starling Drive	1	8/22/2012
Starling Drive / 72nd Ave.		No ramps across from 7202 and 7203 Starling Drive	1	8/22/2012
Mallard Lane / Cardinal Court	NW Corner	Ramp is good with truncated dome	5	8/22/2012
Mallard Lane / Cardinal Court	SW Corner	Ramp is bad	2	8/22/2012
Mallard Lane / Cardinal Court	NE Corner	Cardinal Court side ramp is good with truncated dome, no ramp on Mallard Lane side	5&1	8/22/2012
Mallard Lane / Cardinal Court	SE Corner	Ramp is good with truncated dome	5	8/22/2012
Mallard Lane / 75th Ave.	NW Corner	Mallard Lane side ramp is bad, no ramp on 75th Ave. side	2&1	8/22/2012
Mallard Lane / 75th Ave.	NE Corner	Ramp is bad	2	8/22/2012
Mallard Lane / 75th Ave.		No ramps in front of 4941 75th Ave. or side of 7505 Starling Dr. facing 75th Ave.	1	8/22/2012
75th Ave. / Dove Drive	SW Corner	Dove Dr. side ramp is good, no ramp on 75th Ave. side	4&1	8/22/2012
Dove Drive / Heron Drive	NW Corner	Ramp is average	3	8/22/2012
Dove Drive / Heron Drive	NE Corner	No ramp	1	8/22/2012
Dove Drive / Heron Drive	SW Corner	Ramp is good	4	8/22/2012
Dove Drive / Heron Drive	SE Corner	No ramp	1	8/22/2012
Dove Drive / Pheasant Court	NW Corner	Ramp is bad	2	8/22/2012
Dove Drive / Pheasant Court	NE Corner	No ramp	1	8/22/2012
Dove Drive / Pheasant Court	SW Corner	Ramp is bad	2	8/22/2012
Dove Drive / Pheasant Court	SE Corner	No ramp	1	8/22/2012
Heron Drive / Wren Court	NW Corner	Ramp is bad	2	8/22/2012
Heron Drive / Wren Court	NE Corner	Ramp is bad	2	8/22/2012

Heron Drive / Wren Court	SE Corner	No ramp	1	8/22/2012
Starling Drive / Heron Drive	NW Corner	Ramp is good	3	8/22/2012
Starling Drive / Heron Drive	SE Corner	Ramp is bad	2	8/22/2012
Starling Drive / Heron Drive	NE Corner	Ramp is bad	2	8/22/2012
Starling Drive / 75th Ave.	SE Corner	Ramp is bad	2	8/22/2012
Starling Drive / 75th Ave.	SW Corner	Ramp is bad	2	8/22/2012
Starling Drive / 75th Ave.	NW Corner	No ramp	1	8/22/2012
Hanley Street / 78th Lane	NE Corner	Ramp is average	3	8/22/2012
Mount Drive / 77th Place	SE Corner	Ramp is average, entrance to Rolling Hills Park	3	8/22/2012
Mount Drive		Ramp is average, entrance to Rolling Hills Park	3	8/22/2012
Burr Street / Prairie Rose Drive	NW Corner	Ramp is good	4	8/22/2012
Burr Street / Prairie Rose Drive	SW Corner	Ramp is good	4	8/22/2012
Falcon Drive / Prairie Rose Drive	NE Corner	Ramp is good	4	8/22/2012
Falcon Drive / Prairie Rose Drive	NW Corner	Ramp is good	4	8/22/2012
Buttercup Street / Prairie Rose Drive	NE Corner	Ramp is good	4	8/22/2012
Buttercup Street / Prairie Rose Drive	NW Corner	Ramp is good	4	8/22/2012
Arrowhead Drive / Prairie Rose Drive	NE Corner	Ramp is good	4	8/22/2012
Arrowhead Drive / Prairie Rose Drive	NW Corner	Ramp is good	4	8/22/2012
Indian Trail / Prairie Rose Drive	NE Corner	Ramp is good	4	8/22/2012
Indian Trail / Prairie Rose Drive	NW Corner	No ramp	1	8/22/2012
65th Ave. / Indian Trail	NW Corner	No ramp	1	8/22/2012
65th Ave. / Indian Trail	NE Corner	Ramp is good	4	8/22/2012
65th Ave. / Indian Trail	SE Corner	Ramp is good	4	8/22/2012
Wildrose Lane / Indian Trail	SE Corner	Ramp is good	4	8/22/2012
Wildrose Lane / Indian Trail	SW Corner	Ramp is good	4	8/22/2012
Wildrose Lane / Coyote Lane	SW Corner	Ramp is good	4	8/22/2012
Wildrose Lane / Coyote Lane	SE Corner	No ramp	1	8/22/2012
65th Ave. / Coyote Lane	NW Corner	Ramp is good	4	8/22/2012
65th Ave. / Coyote Lane	NE Corner	Ramp is good	4	8/22/2012
65th Ave. / Coyote Court	SE Corner	No ramp	1	8/22/2012
65th Ave. / Coyote Court	SW Corner	Ramp is good	4	8/22/2012
65th Ave. / Arrowhead Drive	NE Corner	Ramp is good	4	8/22/2012
65th Ave. / Arrowhead Drive	NW Corner	Ramp is good	4	8/22/2012
65th Ave. / Arrowhead Drive	SW Corner	65th Ave. side ramp is good, Arrowhead Dr. side ramp is bad - Curb over 1/2 of ramp	4&2	8/22/2012
65th Ave. / Arrowhead Drive	SE Corner	65th Ave. side ramp is good, Arrowhead Dr. side ramp is bad - Curb over 1/2 of ramp	4&2	8/22/2012
Buttercup Street / 65th Ave.	NW Corner	Ramp is good	4	8/22/2012
Buttercup Street / 65th Ave.	NE Corner	Ramp is good	4	8/22/2012
Buttercup Street / 65th Ave.	SE Corner	Ramp is good	4	8/22/2012
Buttercup Street / 65th Ave.	SW Corner	Ramp is good	4	8/22/2012
65th Ave. / Falcon Drive	NE Corner	Ramp is good, truncated dome	5	8/22/2012
65th Ave. / Falcon Drive	NW Corner	Ramp is good, truncated dome	5	8/22/2012

65th Ave. / Falcon Drive	SW Corner	Ramp is good	4	8/22/2012
65th Ave. / Falcon Drive	SE Corner	Ramp is good	4	8/22/2012
Burr Street / Phillips Road	NW Corner	Ramp is good	4	8/22/2012
Burr Street / Phillips Road	SW Corner	No ramp	1	8/22/2012
Phillips Road / Falcon Drive	NE Corner	No ramp	1	8/22/2012
Phillips Road / Falcon Drive	NW Corner	No ramp	1	8/22/2012
Phillips Road / Falcon Drive	SE Corner	Ramp is good	4	8/22/2012
Phillips Road / Falcon Drive	SW Corner	Ramp is good	4	8/22/2012
Falcon Drive / Tanager Street	NW Corner	Ramp is good	4	8/22/2012
Falcon Drive / Tanager Street	SW Corner	Ramp is good	4	8/22/2012
Falcon Drive / Iris Lane	NW Corner	Ramp is good	4	8/22/2012
Tanager Street	NE Corner	Ramp is average at address 5812/5808 Tanager Street	3	8/22/2012
Tanager Street / Phillips Road	SE Corner	Ramp is good	4	8/22/2012
Tanager Street / Phillips Road	SW Corner	Ramp is good	4	8/22/2012
Coffman Drive / Phillips Road	SE Corner	Ramp is good	4	8/22/2012
Coffman Drive / Phillips Road	SW Corner	Ramp is average	3	8/22/2012
70th Ave. / Foxwood Drive	Median	Ramp is bad that must be crossed to cross street	2	8/22/2012
70th Ave. / Falcon Drive	Median	Ramp is bad that must be crossed to cross street	2	8/22/2012
70th Ave. / Falcon Drive	NW Corner	70th Ave. side ramp is average, no ramp on Falcon Dr. side	3&1	8/22/2012
70th Ave. / Falcon Drive	NE Corner	70th Ave. side ramp is average, no ramp on Falcon Dr. side	3&1	8/22/2012
70th Ave. / Falcon Drive	SW Corner	Ramp is bad	2	8/22/2012
70th Ave. / Falcon Drive	SE Corner	Ramp is average	3	8/22/2012
Swan Lane / Gull Drive	NE Corner	Ramp is average	3	8/22/2012
Swan Lane / Gull Drive	SE Corner	Ramp is average	3	8/22/2012
Falcon Drive / Gull Drive	NW Corner	Ramp is bad	2	8/22/2012
Falcon Drive / Gull Drive	SW Corner	Ramp is bad	2	8/22/2012
Jaskula Lane / Falcon Drive	SE Corner	Ramp is bad	2	8/22/2012
Jaskula Lane / Burr Street	NW Corner	Burr Street side ramp is good, no ramp on Jaskula Lane side	4&1	8/22/2012
Jaskula Lane / Burr Street	SW Corner	Burr Street side ramp is good, no ramp on Jaskula Lane side	4&1	8/22/2012
Edison Street / Joliet Street	SE Corner	Ramp is good	4	8/23/2012
Edison Street / Joliet Street	SW Corner	Ramp is good	4	8/23/2012
69th Place / Edison Street	NW Corner	Ramp is good	4	8/23/2012
69th Place / Edison Street	SW Corner	Ramp is good	4	8/23/2012
69th Place / Edison Street	SE Corner	No ramp	1	8/23/2012
70th Ave. / Edison Street	NW Corner	No ramp	1	8/23/2012
70th Ave. / Edison Street	NE Corner	Ramp is good	4	8/23/2012
70th Ave. / Edison Street	SE Corner	Ramp is good	4	8/23/2012
70th Ave. / Sherman Street	SW Corner	Ramp is good	4	8/23/2012
70th Place / Edison Street	NE Corner	No ramp	1	8/23/2012
70th Place / Edison Street	NW Corner	Ramp is good	4	8/23/2012
70th Place / Edison Street	SW Corner	Ramp is good	4	8/23/2012

70th Place / Edison Street	SE Corner	Ramp is good	4	8/23/2012
70th Place / Bell Street	SE Corner	Ramp is good	4	8/23/2012
71st Ave. / Bell Street	NW Corner	No ramp	1	8/23/2012
71st Ave. / Bell Street	SW Corner	No ramp	1	8/23/2012
71st Ave. / Bell Street	NE Corner	Ramp is good	4	8/23/2012
71st Ave. / Bell Street	SE Corner	Ramp is good	4	8/23/2012
71st Ave. / Edison Street	NE Corner	Ramp is good	4	8/23/2012
71st Ave. / Edison Street	NW Corner	Ramp is good	4	8/23/2012
71st Ave. / Edison Street	SE Corner	No ramp	1	8/23/2012
71st Ave. / Edison Street	SW Corner	No ramp	1	8/23/2012
71st Ave.	Near Lift Station	Ramp is average	3	8/23/2012
71st Ave. / Sherman Street	NW Corner	Ramp is average	3	8/23/2012
71st Ave. / Sherman Street	SW Corner	Ramp is average	3	8/23/2012
Sherman Street	Across from 1911 Sherma	Ramp is good	4	8/23/2012
72nd Ave. / Bell Street	NE Corner	Ramp is good	4	8/23/2012
72nd Ave. / Bell Street	SE Corner	No ramp	1	8/23/2012
73rd Ave. / Jeffrey Street	NW Corner	Ramp is good	4	8/23/2012
73rd Ave. / Jeffrey Street	SW Corner	Ramp is average	3	8/23/2012
73rd Court / Jeffrey Street	NE Corner	Ramp is good	4	8/23/2012
73rd Court / Jeffrey Street	SE Corner	Ramp is average - beginning to sink	3	8/23/2012
73rd Court / Jeffrey Street	Median	No ramp	1	8/23/2012
Bell Street / Pershing Road	NE Corner	Ramp is average	3	8/23/2012
Bell Street / Pershing Road	NW Corner	Ramp is good	4	8/23/2012
Bell Street / Pershing Road	SE Corner	Ramp is average	3	8/23/2012
Bell Street / Pershing Road	SW Corner	Ramp is good	4	8/23/2012
Vale Drive / Pershing Road	NE Corner	Ramp is average	3	8/23/2012
Vale Drive / Pershing Road	NW Corner	Ramp is average	3	8/23/2012
Vale Drive / Pershing Road	SE Corner	Ramp is good	4	8/23/2012
Vale Drive / Pershing Road	SW Corner	Ramp is good	4	8/23/2012
Jeffrey Street /Pershing Road	NW Corner	Ramp is good	4	8/23/2012
Jeffrey Street /Pershing Road	NE Corner	Jeffrey Street side ramp is good, no ramp on Pershing Road side	4&1	8/23/2012
Jeffrey Street /Pershing Road	SW Corner	Ramp is good	4	8/23/2012
Jeffrey Street /Pershing Road	SE Corner	Ramp is good	4	8/23/2012
Pershing Road	Autumn Creek Park	Ramp is good	4	8/23/2012
74th Place / Bell Street	NE Corner	Ramp is good	4	8/23/2012
74th Place / Vale Drive	NW Corner	74th Place side ramp is bad, ramp on Vale Drive side is average	2&3	8/23/2012
74th Place / Jeffrey Street	NE Corner	Ramp is good	4	8/23/2012
Bradford Place / Fawn Valley Drive	NE Corner	Ramp is good	4	8/23/2012
Bradford Place / Fawn Valley Drive	NW Corner	Ramp is good	4	8/23/2012
Bradford Place / Fawn Valley Drive	SW Corner	No ramp	1	8/23/2012
Bradford Place / Fawn Valley Drive	SE Corner	Bradford Place side ramp is good with truncated dome, no ramp on Fawn Valley Dr.	5&1	8/23/2012

Fawn Valley Drive	Across from 7243 FVD	Ramp is good	4	8/23/2012
Bradford Place / Fenway Lane	NE Corner	Ramp is good	4	8/23/2012
Bradford Place / Fenway Lane	NW Corner	Ramp is good	4	8/23/2012
Bradford Place / Fenway Lane	SW Corner	No ramp	1	8/23/2012
Fenway Lane / Winchester Lane	NW Corner	Ramp is good	4	8/23/2012
Fenway Lane / Winchester Lane	SW Corner	Ramp is good	4	8/23/2012
Fenway Lane / Winchester Lane	NE Corner	No ramp	1	8/23/2012
Fenway Lane / Winchester Lane	SE Corner	No ramp	1	8/23/2012
Camden Way / Tremont Trail	NW Corner	Ramp is good	4	8/23/2012
Camden Way / Tremont Trail	SW Corner	Ramp is good	4	8/23/2012
Camden Way / Winchester Lane	NE Corner	Ramp is good	4	8/23/2012
Camden Way / Winchester Lane	SE Corner	Ramp is good	4	8/23/2012
Camden Way / 75th Ave.	NE Corner	Ramp is good	4	8/23/2012
Camden Way / 75th Ave.	NW Corner	Ramp is good	4	8/23/2012
Harvest Drive / Pershing Road	SW Corner	Ramp is good	4	8/23/2012
Harvest Drive / Pershing Road	SE Corner	Ramp is good with truncated dome	5	8/23/2012
Harvest Drive / Pershing Road	NE Corner	No ramp	1	8/23/2012
74th Place / Harvest Drive	NW Corner	Ramp is good	4	8/23/2012
74th Place / Harvest Drive	SW Corner	Ramp is good	4	8/23/2012
75th Ave. / Harvest Drive	NW Corner	Ramp is good	4	8/23/2012
75th Ave. / Harvest Drive	NE Corner	Ramp is average	3	8/23/2012
75th Ave. / Harvest Drive	SW Corner	No ramp	1	8/23/2012
75th Ave. / Harvest Drive	SE Corner	Ramp is good with tactile structure	4	8/23/2012
Pershing Road / Foliage Lane	NE Corner	No ramp	1	8/23/2012
Pershing Road / Foliage Lane	SE Corner	Ramp is good	4	8/23/2012
Pershing Road / Foliage Lane	SW Corner	Ramp is good	4	8/23/2012
74th Place / Greenfield Street	NW Corner	74th Place side ramp is average, ramp on Greenfield St. side is bad	3&2	8/23/2012
Pershing Road / Greenfield Street	NW Corner	No ramp	1	8/23/2012
Pershing Road / Greenfield Street	SW Corner	Ramp is good	4	8/23/2012
Pershing Road / Greenfield Street	SE Corner	Ramp is good	4	8/23/2012
Taylor Street / Pershing Road	NW Corner	No ramp	1	8/23/2012
Taylor Street / Pershing Road	SE Corner	Ramp is bad - Breaking apart	2	8/23/2012
Taylor Street / Pershing Road	SW Corner	Ramp is bad - Sinking	2	8/23/2012
Taylor Street / 74th Place	NE Corner	Ramp is bad - Sinking	2	8/23/2012
Taylor Street / 74th Place	SE Corner	Ramp is average	3	8/23/2012
Taylor Street / 75th Ave.	NW Corner	Ramp is good	4	8/23/2012
Taylor Street / 75th Ave.	NE Corner	Ramp is good	4	8/23/2012
Taylor Street / 75th Ave.	SE Corner	Ramp is good	4	8/23/2012
Taylor Street / 75th Ave.	SW Corner	No ramp	1	8/23/2012
Taylor Street / 76th Ave.	NE Corner	No ramp	1	8/23/2012
Taylor Street / 76th Ave.	SE Corner	Ramp is good	4	8/23/2012

Pershing Road / Hamlin Street	NE Corner	No ramp		1	8/23/2012
Pershing Road / Hamlin Street	SE Corner	Ramp is average		3	8/23/2012
Pershing Road / Hamlin Street	SW Corner	Hamlin Street side ramp is good, no ramp on Pershing Road side	4&1		8/23/2012
Hamlin Street / 74th Place	NE Corner	Ramp is good		4	8/23/2012
Hamlin Street / 74th Place	SE Corner	Ramp is good		4	8/23/2012
Hamlin Street / 74th Place	NW Corner	Ramp is average		3	8/23/2012
Hamlin Street / 74th Place	SW Corner	Hamlin Street side ramp is average, no ramp on 74th Place side	3&1		8/23/2012
75th Ave. / Hamlin Street	NE Corner	Ramp is good		4	8/23/2012
75th Ave. / Hamlin Street	NW Corner	Ramp is good		4	8/23/2012
75th Ave. / Hamlin Street	SE Corner	Ramp is good		4	8/23/2012
75th Ave. / Hamlin Street	SW Corner	Ramp is good		4	8/23/2012
75th Ave. / Pershing Road	NW Corner	75th Ave. side ramp is good, ramp on Pershing Road side is average	4&3		8/23/2012
75th Ave. / Pershing Road	NE Corner	No ramp		1	8/23/2012
75th Ave. / Pershing Road	SW Corner	Ramp is average		3	8/23/2012
75th Ave. / Pershing Road	SE Corner	Ramp is average		3	8/23/2012
75th Ave. / Nicholas Street	SE Corner	Nicholas Street side ramp is good, no ramp on 75th Ave. side	4&1		8/23/2012
75th Ave. / Nicholas Street	SW Corner	Nicholas Street side ramp is good, no ramp on 75th Ave. side	4&1		8/23/2012
76th Ave. / Hamlin Street	NW Corner	Ramp is average		3	8/23/2012
76th Ave. / Hamlin Street	NE Corner	Ramp is average		3	8/23/2012
76th Ave. / Hamlin Street	SE Corner	Ramp is average		3	8/23/2012
76th Ave. / Hamlin Street	SW Corner	76th Ave. side ramp is bad, ramp is average on Hamlin Street side	2&3		8/23/2012
76th Ave. / Kil Court	NW Corner	Ramp is good		4	8/23/2012
76th Ave. / Kil Court	NE Corner	Ramp is average		3	8/23/2012
76th Ave. / Kil Court	SW Corner	No ramp		1	8/23/2012
76th Ave. / Pershing Road	NE Corner	Ramp is average		3	8/23/2012
76th Ave. / Pershing Road	NW Corner	Ramp is average		3	8/23/2012
76th Ave. / Pershing Court	SW Corner	Ramp is average		3	8/23/2012
76th Ave. / Pershing Court	SE Corner	Ramp is bad		2	8/23/2012
76th Ave. / Nicholas Street	SE Corner	No ramp		1	8/23/2012
76th Ave. / Nicholas Street	SW Corner	No ramp		1	8/23/2012
76th Ave. / Nicholas Street	NW Corner	Ramp is bad		2	8/23/2012
76th Ave. / Nicholas Street	NE Corner	Ramp is good		4	8/23/2012
77th Ave. / Pershing Court	NE Corner	No ramp		1	8/23/2012
77th Ave. / Pershing Court	NW Corner	77th Ave. side ramp is average, no ramp on Pershing Court side	3&1		8/23/2012
77th Ave. / Pershing Court	SW Corner	Ramp is good		4	8/23/2012
77th Ave. / Kil Drive	SE Corner	Ramp is good		4	8/23/2012
Kil Drive / Hamlin Street	NE Corner	Ramp is bad		2	8/23/2012
Kil Drive / Hamlin Street	SE Corner	Ramp is bad		2	8/23/2012
74th Place / Pershing Road	SE Corner	No ramp		1	8/23/2012
74th Place / Pershing Road	NE Corner	No ramp		1	8/23/2012
74th Place / Pershing Road	SW Corner	Ramp is good		4	8/23/2012

Joliet Street / Novo Drive	SE Corner	Ramp is average	3	8/23/2012
Joliet Street / Novo Drive	SW Corner	Ramp is good	4	8/23/2012
Novo Drive / High Ridge Drive	NW Corner	Ramp is average	3	8/23/2012
Novo Drive / High Ridge Drive	NE Corner	Ramp is average	3	8/23/2012
Novo Drive / High Ridge Drive	SW Corner	Ramp is bad	2	8/23/2012
Novo Drive / High Ridge Drive	SE Corner	Ramp is good	4	8/23/2012
Selo Drive / High Ridge Drive	SW Corner	Ramp is good	4	8/23/2012
Selo Drive / Short Street	NW Corner	Ramp is good	4	8/23/2012
Novo Drive / Short Street	NE Corner	Ramp is good	4	8/23/2012
Valley Court / High Ridge Drive	NE Corner	No ramp	1	8/23/2012
Valley Court / High Ridge Drive	NW Corner	No ramp	1	8/23/2012
Valley Court / High Ridge Drive	SW Corner	Ramp is good with tactile structure	4	8/23/2012
Valley Court / High Ridge Drive	SE Corner	Ramp is good with tactile structure	4	8/23/2012
Ivy Court / High Ridge Drive	North Corner	Ramp is good	4	8/23/2012
Ivy Court / High Ridge Drive	West Corner	Ramp is good	4	8/23/2012
Farmer Court / St. George Drive	North Corner	Ramp is average	3	8/23/2012
Farmer Court / St. George Drive	East Corner	Ramp is good with tactile structure	4	8/23/2012
James Wittchen Drive / Cline Ave.	NW Corner	Ramp is good	4	8/23/2012
James Wittchen Drive / Cline Ave.	NE Corner	No ramp	1	8/23/2012
James Wittchen Drive / Cline Ave.	SE Corner	Ramp is good	4	8/23/2012
James Wittchen Drive / Cline Ave.	SW Corner	Ramp is good	4	8/23/2012
James Wittchen Drive	Near creek	Ramp is average	3	8/23/2012
James Wittchen Drive / Michael Drive	SW Corner	No ramp	1	8/23/2012
James Wittchen Drive / Michael Drive	SE Corner	No ramp	1	8/23/2012
James Wittchen Drive / Michael Drive	NW Corner	Ramp is average	3	8/23/2012
James Wittchen Drive / Michael Drive	NE Corner	Ramp is average	3	8/23/2012
Julie Drive / Michael Drive	SE Corner	Ramp is average	3	8/23/2012
Julie Drive / Michael Drive	SW Corner	Ramp is bad	2	8/23/2012
Susan Drive / Julie Drive	SE Corner	Ramp is bad	2	8/23/2012
Susan Drive / James Wittchen Drive	NE Corner	Ramp is average	3	8/23/2012
Susan Drive / James Wittchen Drive	NW Corner	Ramp is bad	2	8/23/2012
Cline Ave. / Sussex Drive	NW Corner	No ramp	1	8/23/2012
Cline Ave. / Sussex Drive	SW Corner	Ramp is good	4	8/23/2012
Sussex Drive / Julie Drive	SE Corner	Ramp is average	3	8/23/2012
Sussex Drive / Julie Drive	SW Corner	Ramp is average	3	8/23/2012
Sussex Drive / Bristol Lane	SE Corner	Ramp is good	4	8/23/2012
Julie Drive / Bristol Lane	NW Corner	Ramp is bad	2	8/23/2012
Julie Drive / Bristol Lane	SW Corner	Ramp is good	4	8/23/2012
Joliet Street / Julie Drive	NW Corner	Ramp is average	3	8/23/2012
Joliet Street / Julie Drive	NE Corner	Ramp is average	3	8/23/2012
Joliet Street / Julie Drive	SE Corner	Ramp is good	4	8/23/2012

Joliet Street / Julie Drive	SW Corner	Ramp is good	4	8/23/2012
Pinehurst Lane / Scherwood Greens Dr	NE Corner	No ramp	1	8/23/2012
Pinehurst Lane / Scherwood Greens Dr	SE Corner	Ramp is good	4	8/23/2012
Doral Drive / Pinehurst Lane	SW Corner	Ramp is good	4	8/23/2012
Doral Drive / Pinehurst Lane	SE Corner	Doral Dr. side ramp is good, ramp on Pinehurst Lane side is bad - sinking	4&2	8/23/2012
Tamarack Drive / Pinehurst Lane	NE Corner	No ramp	1	8/23/2012
Tamarack Drive / Pinehurst Lane	NW Corner	No ramp	1	8/23/2012
Tamarack Drive / Pinehurst Lane	SE Corner	Ramp is good	4	8/23/2012
Tamarack Drive / Pinehurst Lane	SW Corner	Ramp is good	4	8/23/2012
Tamarack Drive / Doral Drive	NE Corner	No ramp	1	8/23/2012
Tamarack Drive / Doral Drive	NW Corner	Ramp is average - B-Box is popped up in ramps way	3	8/23/2012
Tamarack Drive / Doral Drive	SW Corner	Ramp is good	4	8/23/2012
Joliet Street / Scherwood Greens Drive	NE Corner	Ramp is good	4	8/23/2012
Joliet Street / Scherwood Greens Drive	NW Corner	Ramp is good	4	8/23/2012
Joliet Street / Scherwood Greens Drive	SW Corner	Ramp is good	4	8/23/2012
Joliet Street / Scherwood Greens Drive	SE Corner	Ramp is good	4	8/23/2012
Joliet Street / Tamarack Drive	NE Corner	Ramp is good	4	8/23/2012
Joliet Street / Tamarack Drive	NW Corner	Ramp is good	4	8/23/2012
Joliet Street / Britton Drive	SE Corner	Ramp is good	4	8/23/2012
Joliet Street / Britton Drive	SW Corner	Ramp is good	4	8/23/2012
Britton Drive	NW Corner near 530 Britton	Ramp facing 1607 Britton is bad, no ramp facing median	2&1	8/23/2012
Cline Ave. / Jordan Circle	Median	No ramp	1	8/23/2012
Jordan Circle	West Corner	Ramp is average near 816 Jordan Circle	3	8/23/2012
Jordan Circle	West Corner	Ramp is bad near 848 Jordan Circle	2	8/23/2012
Jordan Circle	East Corner	Ramp is bad near 850 Jordan Circle	2	8/23/2012
Jordan Circle	South Corner	Ramp is bad near 880 Jordan Circle	2	8/23/2012
Jordan Circle	North Corner	Ramp is bad near 882 Jordan Circle	2	8/23/2012
Jordan Circle	SE Corner	Ramp is bad near 900 Jordan Circle	2	8/23/2012
Jordan Circle	North Corner	Ramp is bad near 902 Jordan Circle	2	8/23/2012
Jordan Circle	East Corner	Ramp is average near 932 Jordan Circle	3	8/23/2012
Jordan Circle	West Corner	Ramp is average near 934 Jordan Circle	3	8/23/2012
Jordan Circle	North Corner	Ramp is average near 964 Jordan Circle	3	8/23/2012
Jordan Circle	West Corner	Ramp is average near 966 Jordan Circle	3	8/23/2012
Jordan Circle	West Corner	Ramp is average near 980 Jordan Circle	3	8/23/2012
Hampton Court / Reiplinger Road	NW Corner	Ramp is good	4	8/23/2012
Hampton Court / Reiplinger Road	SW Corner	Ramp is good	4	8/23/2012
Austin Ave. / Reiplinger Road	NW Corner	Ramp is good, truncated dome	5	8/23/2012
Austin Ave. / Reiplinger Road	SW Corner	Ramp is good facing Reiplinger, no ramp on Austin Ave. side	4&1	8/23/2012
Austin Ave. / North Road	NW Corner	Ramp is good	4	8/23/2012
Austin Ave. / North Road	SW Corner	Ramp is good	4	8/23/2012
North Road / Hilltop Drive	NE Corner	No ramp	1	8/23/2012

North Road / Hilltop Drive	SW Corner	Ramp is average	3	8/23/2012
North Road / Hilltop Drive	SE Corner	Ramp is bad	2	8/23/2012
North Road	Near Col de sac	Ramp is good	4	8/23/2012
Fairview Lane / Austin Ave.	NE Corner	Ramp is good on Austin Ave. side	4	8/23/2012
Fairview Lane / Austin Ave.	NW Corner	Ramp is good	4	8/23/2012
Hilltop Drive / US 30	NW Corner	Ramp is good facing Hilltop Drive	4	8/23/2012
Hilltop Drive / US 30 / Oak Ridge	NE Corner	Ramp is good	4	8/23/2012
Austin Ave. / Oak Ridge/ DQ	NW Corner / Dairy Queen	Ramp is good	4	8/23/2012
Austin Ave. / Oak Ridge	SW Corner	Ramp is good	4	8/23/2012
Austin Ave. / Oak Ridge	NW Corner	Ramp is good	4	8/23/2012
Oak Street / Spivak Drive	SW Corner	Ramp is good facing Spivak Dr., No ramp to Oak Street	4&1	8/23/2012
Oak Street / Spivak Drive	SE Corner	Ramp is good	4	8/23/2012
Oak Street / Ben Drive	SW Corner	Ramp is good	4	8/23/2012
Oak Street / Ben Drive	SE Corner	Ramp is good	4	8/23/2012
Scherland Drive	South side of street	No ramp near 445 Scherland Drive where sidewalk begins	1	8/23/2012
Scherland Drive	North side of street	No ramp near 318 Scherland Drive where sidewalk begins	1	8/23/2012
Scherland Drive / Spivak Drive	NW Corner	No ramp	1	8/23/2012
Scherland Drive / Spivak Drive	NE Corner	No ramp	1	8/23/2012
Scherland Drive / Spivak Drive	SE Corner	No ramp	1	8/23/2012
Scherland Drive / Spivak Drive	SW Corner	No ramp	1	8/23/2012
Scherland Drive / Ben Drive	NE Corner	Ramp is good	4	8/23/2012
Scherland Drive / Ben Drive	NW Corner	Ramp is good facing Scherland Dr., no ramp facing Ben Drive	4&1	8/23/2012
Scherland Drive / Ben Drive	SW Corner	No ramp	1	8/23/2012
Scherland Drive / Ben Drive	SE Corner	Ramp is good with truncated dome facing Ben Dr. side, ramp is good facing Scherland Dr.	5&4	8/23/2012
Golf View Drive / Austin Ave.	NE Corner	No ramp	1	8/23/2012
Golf View Drive / Austin Ave.	SE Corner	Ramp is average	3	8/23/2012
Bunker Drive / Austin Ave.	NE Corner	No ramp	1	8/23/2012
Bunker Drive / Austin Ave.	SE Corner	No ramp	1	8/23/2012
Redar Drive / Austin Ave.	NW Corner	No ramp	1	8/23/2012
Redar Drive / Austin Ave.	SW Corner	No ramp	1	8/23/2012
Redar Drive / Austin Ave.	NE Corner	Ramp is good	4	8/23/2012
Redar Drive / Austin Ave.	SE Corner	Ramp is good	4	8/23/2012
Austin Ave. / Kolling Road	NE Corner	Ramp is good	4	8/23/2012
Austin Ave.	In front of Homan School	Ramp is good (All ramps are good)	4	8/23/2012
Joliet Street / Austin Ave.	NE Corner	Ramp is good	4	8/23/2012
Joliet Street / Austin Ave.	SE Corner	Ramp is good	4	8/23/2012
Joliet Street / Austin Ave.	NW Corner	Ramp is good	4	8/23/2012
Joliet Street / Austin Ave.	SW Corner	Ramp is average facing Austin Ave., ramp is bad facing Joliet St.	3&2	8/23/2012
Joliet Street / South Park Ave.	NW Corner	Ramp is good	4	8/23/2012
Joliet Street / South Park Ave.	NE Corner	Ramp is good	4	8/23/2012
Joliet Street / South Park Ave.	SE Corner	Ramp is good	4	8/23/2012

Joliet Street / South Park Ave.	SW Corner	Ramp is good	4	8/23/2012
Joliet Street / Schafer Drive	SE Corner	Ramp is good	4	8/23/2012
Joliet Street / Schafer Drive	SW Corner	Ramp is good	4	8/23/2012
Joliet Street / Schafer Drive	NE Corner	No ramp	1	8/23/2012
Kolling Road	NE Corner	Ramp is good near drinking fountain	4	8/23/2012
Joliet Street / Kolling Road	NE Corner	Ramp is good with tactile surface facing Kolling Road	4	8/23/2012
Redar Drive / Junction Ave.	NE Corner	No ramp	1	8/23/2012
Redar Drive / Junction Ave.	SE Corner	No ramp	1	8/23/2012
Joliet Street / Junction Ave.	NE Corner	Ramp is bad, Pole, stop sign, etc. in the way	2	8/23/2012
Joliet Street / Junction Ave.	SE Corner	No ramp	1	8/23/2012
Joliet Street / Junction Ave.	NW Corner	Ramp is good	4	8/23/2012
Main Street / Plum Creek Drive	SW Corner	No ramp	1	8/27/2012
Plum Creek Drive	Start of sidewalk near Main	No ramp	1	8/27/2012
Plum Creek Drive / Spruce Lane	NE Corner	No ramp	1	8/27/2012
Plum Creek Drive / Spruce Lane	SE Corner	No ramp	1	8/27/2012
Plum Creek Drive / Spruce Lane	SW Corner	Ramp is good	4	8/27/2012
Plum Creek Drive / Spruce Lane	NW Corner	Ramp is good	4	8/27/2012
Plum Creek Drive / Bluegrass Drive	SE Corner	No ramp	1	8/27/2012
Plum Creek Drive / Bluegrass Drive	NE Corner	No ramp	1	8/27/2012
Plum Creek Drive / Holly Lane	NE Corner	No ramp	1	8/27/2012
Plum Creek Drive / Holly Lane	SE Corner	No ramp	1	8/27/2012
Holly Lane / Bluegrass Drive	SE Corner	No ramp	1	8/27/2012
Holly Lane / Bluegrass Drive	NE Corner	No ramp	1	8/27/2012
Holly Lane / Bluegrass Drive	NW Corner	No ramp	1	8/27/2012
Holly Lane / Bluegrass Drive	SW Corner	No ramp	1	8/27/2012
Plum Creek Drive / Woodhollow Drive	NE Corner	Ramp is good	4	8/27/2012
Plum Creek Drive / Woodhollow Drive	NW Corner	Ramp is good	4	8/27/2012
Plum Creek Drive / Woodhollow Drive	SW Corner	Ramp is good	4	8/27/2012
Plum Creek Drive / Woodhollow Drive	SE Corner	Ramp is good	4	8/27/2012
Persimmon Drive / Woodhollow Drive	SE Corner	Ramp is good	4	8/27/2012
Persimmon Drive / Woodhollow Drive	SW Corner	Ramp is good	4	8/27/2012
Bluegrass Drive / Woodhollow Drive	NE Corner	Ramp is good	4	8/27/2012
Bluegrass Drive / Woodhollow Drive	NW Corner	Ramp is good	4	8/27/2012
Whitewood Drive / Woodhollow Drive	SE Corner	Ramp is good	4	8/27/2012
Whitewood Drive / Woodhollow Drive	SW Corner	Ramp is good with truncated dome	5	8/27/2012
Holly Lane / Woodhollow Drive	NE Corner	Ramp is good with truncated dome facing Holly Lane	5	8/27/2012
Holly Lane / Woodhollow Drive	NW Corner	Ramp is good	4	8/27/2012
Woodhollow Drive	At commercial road north	Ramp is good	4	8/27/2012
Woodhollow Drive	At commercial road south	Ramp is good	4	8/27/2012
Plum Creek Drive / Brook Lane	NE Corner	No ramp	1	8/27/2012
Brook Lane / Persimmon Drive	NE Corner	Ramp is average on Persimmon Drive side, ramp is good on Brook Lane side	3&4	8/27/2012

Brook Lane / Persimmon Drive	NW Corner	Ramp is average	3	8/27/2012
Persimmon Drive / Evergreen Lane	NE Corner	Ramp is good with tactile surface	4	8/27/2012
Persimmon Drive / Evergreen Lane	SE Corner	Ramp is good with tactile surface	4	8/27/2012
Persimmon Drive / Evergreen Lane	SW Corner	No ramp	1	8/27/2012
Brook Lane / Whitewood Drive	NW Corner	Ramp is good	4	8/27/2012
Brook Lane / Whitewood Drive	SW Corner	Ramp is average	3	8/27/2012
Whitewood Drive / Evergreen Lane	NW Corner	Ramp is average	3	8/27/2012
Whitewood Drive / Evergreen Lane	SW Corner	No ramp	1	8/27/2012
Cypress Drive / Maple Place	NE Corner	No ramp	1	8/27/2012
Cypress Drive / Maple Place	NW Corner	No ramp	1	8/27/2012
Cypress Drive / Maple Place	SE Corner	No ramp	1	8/27/2012
Cypress Drive / Maple Place	SW Corner	No ramp	1	8/27/2012
Willow Lane / Maple Place	SE Corner	Ramp is average with tactile surface	3	8/27/2012
Willow Lane / Maple Place	SW Corner	Ramp is average with tactile surface	3	8/27/2012
Heather Court / Maple Place	SE Corner	Ramp is good with tactile surface	4	8/27/2012
Heather Court / Maple Place	SW Corner	Ramp is average with tactile surface	3	8/27/2012
Pine Street / Maple Place	SW Corner	Ramp is good with tactile surface	4	8/27/2012
Pine Street / Maple Place	SE Corner	Ramp is good with tactile surface	4	8/27/2012
Woodhollow Drive / Maple Place	NE Corner	Ramp is average	3	8/27/2012
Woodhollow Drive / Maple Place	NW Corner	No ramp	1	8/27/2012
Woodhollow Drive / Maple Place	SE Corner	Ramp is bad	2	8/27/2012
Woodhollow Drive / Maple Place	SW Corner	Ramp is good	4	8/27/2012
Lilac Court / Maple Place	SE Corner	Ramp is average with tactile surface	3	8/27/2012
Lilac Court / Maple Place	SW Corner	Ramp is good	4	8/27/2012
Elm Court / Woodhollow Drive	NW Corner	Ramp is good	4	8/27/2012
Elm Court / Woodhollow Drive	SW Corner	Ramp is good	4	8/27/2012
Oak Court / Woodhollow Drive	NW Corner	Ramp is average	3	8/27/2012
Oak Court / Woodhollow Drive	NE Corner	Ramp is average	3	8/27/2012
Oak Court / Woodhollow Drive	SE Corner	Ramp is good	4	8/27/2012
Oak Court / Woodhollow Drive	SW Corner	Ramp is good	4	8/27/2012
Pine Court / Woodhollow Drive	SW Corner	Ramp is good	4	8/27/2012
Pine Court / Woodhollow Drive	NW Corner	Ramp is good	4	8/27/2012
Pine Street / Woodhollow Drive	NE Corner	Ramp is good with tactile surface	4	8/27/2012
Pine Street / Woodhollow Drive	SE Corner	Ramp is good	4	8/27/2012
Willow Court / Woodhollow Drive	NW Corner	Ramp is good	4	8/27/2012
Willow Court / Woodhollow Drive	SW Corner	Ramp is good	4	8/27/2012
Willow Lane / Woodhollow Drive	NE Corner	Ramp is good	4	8/27/2012
Willow Lane / Woodhollow Drive	SE Corner	Ramp is good	4	8/27/2012
Willow Lane	NW Corner	Ramp is good on corner of 120 Willow Lane	4	8/27/2012
Woodhollow Court / Woodhollow Drive	NW Corner	Ramp is good	4	8/27/2012
Woodhollow Court / Woodhollow Drive	NE Corner	Ramp is good	4	8/27/2012

Woodhollow Court / Woodhollow Drive	SE Corner	Ramp is good	4	8/27/2012
Woodhollow Court / Woodhollow Drive	SW Corner	Ramp is good	4	8/27/2012
Lisa Lane / Woodhollow Drive	SE Corner	Ramp is good	4	8/27/2012
Lisa Lane / Woodhollow Drive	SW Corner	Ramp is good	4	8/27/2012
Cypress Drive / Woodhollow Drive	NW Corner	Ramp is good with tactile surface	4	8/27/2012
Cypress Drive / Woodhollow Drive	NE Corner	Ramp is good	4	8/27/2012
Cypress Drive / Woodhollow Drive	SE Corner	Ramp is good	4	8/27/2012
Cypress Drive / Woodhollow Drive	SW Corner	Ramp is good	4	8/27/2012
Lisa Lane / Cypress Drive	NE Corner	Ramp is average	3	8/27/2012
Lisa Lane / Cypress Drive	NW Corner	Ramp is average	3	8/27/2012
Lisa Lane / Cypress Drive	SE Corner	Ramp is average	3	8/27/2012
Lisa Lane / Cypress Drive	SW Corner	Ramp is bad	2	8/27/2012
Cypress Drive / Mulberry Lane	NE Corner	No ramp	1	8/27/2012
Cypress Drive / Mulberry Lane	SE Corner	No ramp	1	8/27/2012
Cypress Drive / Mulberry Lane	SW Corner	No ramp	1	8/27/2012
Mulberry Lane / Briarwood Drive	NE Corner	Ramp is good	4	8/27/2012
Mulberry Lane / Briarwood Drive	NW Corner	Ramp is good	4	8/27/2012
Mulberry Lane / Briarwood Drive	SE Corner	Ramp is good	4	8/27/2012
Mulberry Lane / Briarwood Drive	SW Corner	Ramp is good	4	8/27/2012
Forest Drive / Woodhollow Drive	NE Corner	Ramp is good	4	8/27/2012
Forest Drive / Woodhollow Drive	NW Corner	Ramp is good	4	8/27/2012
Forest Drive / Briarwood Drive	SE Corner	Ramp is good	4	8/27/2012
Forest Drive / Briarwood Drive	SW Corner	Ramp is good	4	8/27/2012
Forest Drive / Briarwood Drive	NE Corner	No ramp	1	8/27/2012
Briarwood Drive / Juniper Drive	NW Corner	Ramp is good	4	8/27/2012
Juniper Drive / Mulberry Lane	NW Corner	No ramp	1	8/27/2012
Juniper Drive / Mulberry Lane	SW Corner	No ramp	1	8/27/2012
Juniper Drive / Cedar Lane	NW Corner	No ramp	1	8/27/2012
Juniper Drive / Cedar Lane	SW Corner	No ramp	1	8/27/2012
Juniper Drive / Spruce Drive	SE Corner	No ramp	1	8/27/2012
Juniper Drive / Spruce Drive	SW Corner	No ramp	1	8/27/2012
Maple Court / Spruce Drive	NE Corner	No ramp	1	8/27/2012
Maple Court / Spruce Drive	NW Corner	No ramp	1	8/27/2012
Cedar Lane / Spruce Drive	SE Corner	No ramp	1	8/27/2012
Cedar Lane / Spruce Drive	SW Corner	No ramp	1	8/27/2012
Cedar Lane / Spruce Drive	NW Corner	No ramp	1	8/27/2012
Spruce Court / Spruce Drive	NE Corner	Ramp is good	4	8/27/2012
Spruce Court / Spruce Drive	NW Corner	Ramp is good	4	8/27/2012
Kennedy Ave.	Outside 1605 Kennedy Ave	No ramp where sidewalk begins	1	8/27/2012
Kennedy Ave. / Joliet Street	NE Corner	Ramp is good	4	8/27/2012
Kennedy Ave. / Joliet Street	NW Corner	Ramp is good	4	8/27/2012

Terrace Drive / Joliet Street	NW Corner	Ramp is good	4	8/27/2012
Terrace Drive / Joliet Street	NE Corner	Ramp is good	4	8/27/2012
Terrace Drive / Joliet Street	SW Corner	Ramp is good	4	8/27/2012
Terrace Drive / Joliet Street	SE Corner	Ramp is good	4	8/27/2012
Joliet Street / Reed Lane	SE Corner	Ramp is good	4	8/27/2012
Kuhn Drive / Joliet Street	NE Corner	Ramp is good	4	8/27/2012
Kuhn Drive / Joliet Street	NW Corner	Ramp is good	4	8/27/2012
Homan Drive / Joliet Street	NW Corner	Ramp is good	4	8/27/2012
Homan Drive / Joliet Street	NE Corner	Ramp is good	4	8/27/2012
Austin Ave. / Wilhelm Street	NE Corner	Ramp is good	4	8/27/2012
Austin Ave. / Wilhelm Street	NW Corner	Ramp is good	4	8/27/2012
Austin Ave. / Wilhelm Street	SW Corner	Ramp is good	4	8/27/2012
Austin Ave. / Wilhelm Street	SE Corner	Ramp is good	4	8/27/2012
Vernon Ave. / Wilhelm Street	NW Corner	No ramp	1	8/27/2012
Vernon Ave. / Wilhelm Street	SW Corner	Ramp is good	4	8/27/2012
Vernon Ave. / Wilhelm Street	SE Corner	Ramp is good	4	8/27/2012
South Park Ave. / Wilhelm Street	NE Corner	Ramp is good	4	8/27/2012
South Park Ave. / Wilhelm Street	NW Corner	Ramp is good	4	8/27/2012
South Park Ave. / Wilhelm Street	SE Corner	Ramp is good	4	8/27/2012
South Park Ave. / Wilhelm Street	SW Corner	Ramp is good	4	8/27/2012
Schafer Drive / Wilhelm Street	SW Corner	Ramp is good facing Wilhelm Street, ramp is bad facing Schafer Drive	4&2	8/27/2012
Schafer Drive / Wilhelm Street	SE Corner	No ramp	1	8/27/2012
Schafer Drive / Wilhelm Street	NW Corner	Ramp is good	4	8/27/2012
Schafer Drive / Wilhelm Street	NE Corner	No ramp	1	8/27/2012
Schafer Drive / Gregory Street	NE Corner	Ramp is good	4	8/27/2012
Schafer Drive / Gregory Street	NW Corner	Ramp is average	3	8/27/2012
Schafer Drive / Gregory Street	SE Corner	Ramp is good	4	8/27/2012
Schafer Drive / Gregory Street	SW Corner	Ramp is average	3	8/27/2012
South Park Ave. / Gregory Street	SW Corner	Ramp is good	4	8/27/2012
South Park Ave. / Gregory Street	SE Corner	No ramp	1	8/27/2012
South Park Ave. / Gregory Street	NE Corner	Ramp is good	4	8/27/2012
South Park Ave. / Gregory Street	NW Corner	Ramp is good	4	8/27/2012
Vernon Ave. / Gregory Street	NW Corner	Ramp is good	4	8/27/2012
Vernon Ave. / Gregory Street	NE Corner	Ramp is good	4	8/27/2012
Vernon Ave. / Gregory Street	SE Corner	Ramp is good	4	8/27/2012
Vernon Ave. / Gregory Street	SW Corner	Ramp is good	4	8/27/2012
Austin Ave. / Gregory Street	SW Corner	No ramp	1	8/27/2012
Austin Ave. / Gregory Street	SE Corner	Ramp is good	4	8/27/2012
Austin Ave. / Gregory Street	NE Corner	Ramp is good facing Gregory Street, No ramp on Austin Ave. side	4&1	8/27/2012
Austin Ave. / Gregory Street	NW Corner	No ramp	1	8/27/2012
Grant Street / South Park Ave.	NE Corner	Ramp is average	3	8/27/2012

Grant Street / South Park Ave.	SE Corner	Ramp is good	4	8/27/2012
Grant Street / South Park Ave.	SW Corner	Ramp is good	4	8/27/2012
South Park Ave.	Across from 304 Lake Stre	No ramp on parkside sidewalk	1	8/27/2012
Lake Street / South Park Ave.	NE Corner	No ramp	1	8/27/2012
Lake Street / South Park Ave.	SE Corner	No ramp	1	8/27/2012
South Park Ave. / Park Street	NE Corner	No ramp	1	8/27/2012
South Park Ave. / Park Street	SW Corner	Ramp is good with truncated dome	5	8/27/2012
South Park Ave. / Park Street	NW Corner	Ramp is good with truncated dome	5	8/27/2012
Austin Ave. / Park Street	NE Corner	Ramp is good with truncated dome	5	8/27/2012
Austin Ave. / Park Street	SE Corner	Ramp is good with truncated dome	5	8/27/2012
Park Street	Entrance to Park from Lot	All ramps are good with truncated dome	5	8/27/2012
Park Street	across from park	ramp to the bike path is good	4	8/27/2012
Reiplinger Road / Wilhelm Street	SE Corner	Ramp is good	4	8/27/2012
Reiplinger Road / Wilhelm Street	SW Corner	Ramp is good	4	8/27/2012
Wilhelm Street / Police Parking Lot	NE Corner	Ramp is average	3	8/27/2012
Reiplinger Road / Burgundy Street	NW Corner	Ramp is good	4	8/27/2012
Reiplinger Road / Burgundy Street	SW Corner	Ramp is good	4	8/27/2012
Reiplinger Road / Chelsea Street	NW Corner	Ramp is good	4	8/27/2012
Reiplinger Road / Chelsea Street	SW Corner	Ramp is good	4	8/27/2012
Reiplinger Road / Hampton Court	NW Corner	Ramp is good	4	8/27/2012
Reiplinger Road / Hampton Court	SW Corner	Ramp is good	4	8/27/2012
Gregory Street / Protsman Drive	SW Corner	No ramp	1	8/27/2012
Gregory Street / Protsman Drive	SE Corner	No ramp	1	8/27/2012
Hartley Drive / James Wittchen Drive	NE Corner	No ramp	1	8/27/2012
James Wittchen Drive / Govert Drive	SE Corner	No ramp	1	8/27/2012
James Wittchen Drive / Govert Drive	SW Corner	No ramp	1	8/27/2012
Protsman Drive / Siebert Drive	NE Corner	No ramp	1	8/27/2012
Protsman Drive / Siebert Drive	SE Corner	No ramp	1	8/27/2012
Govert Drive / Siebert Drive	NW Corner	No ramp	1	8/27/2012
Govert Drive / Siebert Drive	SW Corner	No ramp	1	8/27/2012
Govert Drive / Teibel Drive	NW Corner	No ramp	1	8/27/2012
Govert Drive / Teibel Drive	SW Corner	No ramp	1	8/27/2012
Protsman Drive / Teibel Drive	NE Corner	No ramp	1	8/27/2012
Teibel Drive / Fishtorn Drive	SE Corner	No ramp	1	8/27/2012
Teibel Drive / Fishtorn Drive	SW Corner	No ramp	1	8/27/2012
Fishtorn Drive / Kathleen Drive	NE Corner	No ramp	1	8/27/2012
South Park Ave. / Kathleen Drive	SE Corner	No ramp	1	8/27/2012
Kathleen Drive / Christenson Lane	SW Corner	No ramp	1	8/27/2012
Kathleen Drive / Christenson Lane	SE Corner	No ramp	1	8/27/2012
Kathleen Drive / Govert Drive	NE Corner	No ramp	1	8/27/2012
Kathleen Drive / Govert Drive	NW Corner	No ramp	1	8/27/2012

Kathleen Drive / Govert Drive	SE Corner	No ramp	1	8/27/2012
Kathleen Drive / Govert Drive	SW Corner	No ramp	1	8/27/2012
Benco Court / Govert Drive	NW Corner	No ramp	1	8/27/2012
Benco Court / Govert Drive	SW Corner	No ramp	1	8/27/2012
Gard Lane / Govert Drive	NW Corner	No ramp	1	8/27/2012
Gard Lane / Govert Drive	SW Corner	No ramp	1	8/27/2012
Knoxbury Drive / Govert Drive	NE Corner	No ramp	1	8/27/2012
Knoxbury Drive / Govert Drive	SE Corner	No ramp	1	8/27/2012
Dinges Court / Govert Drive	NW Corner	No ramp	1	8/27/2012
Dinges Court / Govert Drive	SW Corner	No ramp	1	8/27/2012
Cline Ave. / Sandi Lane	NW Corner	Ramp is good	4	8/28/2012
Cline Ave. / Sandi Lane	SW Corner	Ramp is good	4	8/28/2012
Terri Lane / Sandi Lane	NW Corner	No ramp	1	8/28/2012
Terri Lane / Sandi Lane	NE Corner	No ramp	1	8/28/2012
Terri Lane / Sandi Lane	SE Corner	Ramp is good	4	8/28/2012
Terri Lane / Sandi Lane	SW Corner	Ramp is good	4	8/28/2012
Terri Lane / Kathleen Drive	NW Corner	No ramp	1	8/28/2012
Terri Lane / Kathleen Drive	SW Corner	No ramp	1	8/28/2012
Patti Lane / Kathleen Drive	SW Corner	No ramp	1	8/28/2012
Patti Lane / Kathleen Drive	SE Corner	Ramp is good	4	8/28/2012
Patti Lane / Kathleen Drive	NW Corner	No ramp	1	8/28/2012
Patti Lane / Kathleen Drive	NE Corner	No ramp	1	8/28/2012
Terri Lane / Christy Lane	NW Corner	No ramp	1	8/28/2012
Cline Ave. / Newcastle Drive	NW Corner	Ramp is good	4	8/28/2012
Cline Ave. / Newcastle Drive	SW Corner	Ramp is good	4	8/28/2012
Cline Ave. / Dorchester Lane	NE Corner	Ramp is average	3	8/28/2012
Cline Ave. / Dorchester Lane	NW Corner	Ramp is average	3	8/28/2012
Cline Ave. / Dorchester Lane	SE Corner	No ramp	1	8/28/2012
Cline Ave. / Dorchester Lane	SW Corner	No ramp	1	8/28/2012
Newcastle Drive / Ashbury Lane	SE Corner	No ramp	1	8/28/2012
Newcastle Drive / Ashbury Lane	SW Corner	No ramp	1	8/28/2012
Newcastle Drive / Ashbury Lane	NE Corner	Ramp is average	3	8/28/2012
Newcastle Drive / Ashbury Lane	NW Corner	Ramp is average	3	8/28/2012
Ashbury Lane	Near 2041 Ashbury	No ramp	1	8/28/2012
Ashbury Lane	Near 2040 Ashbury	No ramp	1	8/28/2012
Knoxbury Drive / Ashbury Lane	SE Corner	No ramp	1	8/28/2012
Dorchester Lane	Near 2038 Dorchester	No ramp	1	8/28/2012
Knoxbury Drive / Dorchester Lane	SE Corner	No ramp	1	8/28/2012
Knoxbury Drive	Near 2023/2022	No ramp	1	8/28/2012
Windsor Court / Knoxbury Drive	SE Corner	No ramp	1	8/28/2012
Windsor Court / Knoxbury Drive	SW Corner	No ramp	1	8/28/2012

Windsor Court	Near 2036 Windsor Ct.	No ramp	1	8/28/2012
Windsor Court	Near 2035 Windsor Ct.	No ramp	1	8/28/2012
Cline Ave. / Knoxbury Drive	SW Corner	Ramp is good	4	8/28/2012
Cline Ave. / Knoxbury Drive	NW Corner	Ramp is good	4	8/28/2012
Grand Haven Way / Mackinaw Place	SE Corner	Ramp is good	4	8/28/2012
Grand Haven Way / Mackinaw Place	SW Corner	Ramp is good	4	8/28/2012
Grand Haven Way / Mackinaw Place	NE Corner	No ramp	1	8/28/2012
Traverse City Court / Mackinaw Place	SE Corner	Ramp is good	4	8/28/2012
Traverse City Court / Mackinaw Place	SW Corner	Ramp is good	4	8/28/2012
Grand Haven Way / Charlevoix Way	NE Corner	Ramp is average	3	8/28/2012
Grand Haven Way / Charlevoix Way	NW Corner	Ramp is average	3	8/28/2012
Mackinaw Place / Charlevoix Way	SE Corner	Ramp is good	4	8/28/2012
Mackinaw Place / Charlevoix Way	NW Corner	No ramp	1	8/28/2012
Mackinaw Place / Charlevoix Way	SW Corner	Ramp is good	4	8/28/2012
Briar Cove Drive / Mackinaw Place	NE Corner	Ramp is good	4	8/28/2012
Briar Cove Drive / Mackinaw Place	NW Corner	Ramp is good	4	8/28/2012
Mackinaw Place / Pentwater Lane	SE Corner	Ramp is average	3	8/28/2012
Mackinaw Place / Pentwater Lane	SW Corner	Ramp is good	4	8/28/2012
Mackinaw Place / New Buffalo Drive	SE Corner	Ramp is average	3	8/28/2012
Mackinaw Place / New Buffalo Drive	SW Corner	Ramp is average	3	8/28/2012
Pentwater Lane / New Buffalo Drive	NE Corner	Ramp is good	4	8/28/2012
Pentwater Lane / New Buffalo Drive	NW Corner	Ramp is good	4	8/28/2012
Manistee Ave. / Mackinaw Place	SE Corner	Ramp is average	3	8/28/2012
Ludington Lane / Manistee Ave.	SW Corner	Ramp is average	3	8/28/2012
Ludington Lane / Manistee Ave.	NW Corner	Ramp is average	3	8/28/2012
Ludington Lane / Manistee Ave.	NE Corner	No ramp	1	8/28/2012
Manistee Ave. / Pentwater Lane	SW Corner	No ramp	1	8/28/2012
Manistee Ave. / Pentwater Lane	SE Corner	Ramp is good	4	8/28/2012
Manistee Ave. / Pentwater Lane	NE Corner	Ramp is good	4	8/28/2012
East Cambridge Drive / Wellington Te	NW Corner	Ramp is good	4	8/28/2012
East Cambridge Drive / Wellington Te	SW Corner	Ramp is good	4	8/28/2012
Wellington Terrace / Barrington Cour	NE Corner	Ramp is good	4	8/28/2012
Wellington Terrace / Barrington Cour	SE Corner	Ramp is good	4	8/28/2012
East Cambridge Drive / Barrington Co	NE Corner	Ramp is good	4	8/28/2012
East Cambridge Drive / Barrington Co	SE Corner	Ramp is good	4	8/28/2012
Stonebridge Way / Stonebridge Drive	SE Corner	Ramp is good	4	8/28/2012
Stonebridge Way / Stonebridge Drive	SW Corner	Ramp is good	4	8/28/2012
Willowbrook Drive	Near 944 Willowbrook Dr.	No ramp, undeveloped	1	8/28/2012
Willowbrook Drive	Near 1001 Willowbrook D	No ramp, undeveloped	1	8/28/2012
Willowbrook Drive	Near 1012 Willowbrook D	No ramp, undeveloped	1	8/28/2012
Willowbrook Drive	Near 1032 Willowbrook D	No ramp, undeveloped	1	8/28/2012

Willowbrook Drive	Near 1037 Willowbrook D	No ramp, undeveloped	1	8/28/2012
Willowbrook Drive	Near 1043 Willowbrook D	No ramp, undeveloped	1	8/28/2012
Willowbrook Drive	Near 1102 Willowbrook D	No ramp, undeveloped	1	8/28/2012
Willowbrook Drive	Near 1124 Willowbrook D	No ramp, undeveloped	1	8/28/2012
Barrington Court	Near 1016 Barrington Ct.	No ramp, undeveloped	1	8/28/2012
Kensington Court	Near 1032 Kensington Ct.	No ramp, undeveloped	1	8/28/2012
Kensington Court	Near 1024 Kensington Ct.	No ramp, undeveloped	1	8/28/2012
Stonebridge Drive	Near 1127 Stonebridge Dr	No ramp, undeveloped	1	8/28/2012
Stonebridge Drive	Near 1105 Stonebridge Dr	No ramp, undeveloped	1	8/28/2012
Stonebridge Drive	Near Outlot, across from 1	No ramp, undeveloped	1	8/28/2012
Stonebridge Drive	Near 935 Stonebridge Dr.	No ramp, undeveloped	1	8/28/2012
Stonebridge Drive	Near 930 Stonebridge Dr.	No ramp, undeveloped	1	8/28/2012
Stonebridge Drive	Near 929 Stonebridge Dr.	No ramp, undeveloped	1	8/28/2012
Stonebridge Drive	Near 916 Stonebridge Dr.	No ramp, undeveloped	1	8/28/2012
Stonebridge Drive	Near 909 Stonebridge Dr.	No ramp, undeveloped	1	8/28/2012
Lakewood Court	Col-de-sac near 1059 Lake	Ramp is good	4	8/29/2012
Lakewood Lane / Timberwood Lane	NW Corner	Ramp is bad	2	8/29/2012
Lakewood Lane / Timberwood Lane	SW Corner	Ramp is bad	2	8/29/2012
Timberwood Lane	Near 1163 Timberwood	Ramp is good	4	8/29/2012
Timberwood Lane	No median	No ramp	1	8/29/2012
Timberwood Lane	Near 1185 Timberwood	Ramp is average	3	8/29/2012
Timberwood Lane / Janice Drive	NE Corner	Ramp is good	4	8/29/2012
Timberwood Lane / Janice Drive	SE Corner	Ramp is good	4	8/29/2012
Lakewood Lane / Teakwood Court	NW Corner	Ramp is bad	2	8/29/2012
Lakewood Lane / Teakwood Court	SW Corner	Ramp is average	3	8/29/2012
Cherrywood Lane / Lakewood Lane	NE Corner	Ramp is good	4	8/29/2012
Cherrywood Lane / Lakewood Lane	SE Corner	Ramp is good	4	8/29/2012
Janice Drive / Caroline Ave.	NE Corner	Ramp is good with tactile surface	4	8/29/2012
Lakewood Lane / Caroline Ave.	NW Corner	Ramp is average and seperating	3	8/29/2012
Lakewood Lane / Caroline Ave.	NE Corner	Ramp is good	4	8/29/2012
Caroline Ave. / Burlwood Lane	NE Corner	Ramp is good	4	8/29/2012
Caroline Ave. / Burlwood Lane	NW Corner	Ramp is good	4	8/29/2012
Burlwood Lane / Cherrywood Lane	SE Corner	Ramp is average	3	8/29/2012
Burlwood Lane / Cherrywood Lane	SW Corner	Ramp is good	4	8/29/2012
Burlwood Lane / Cherrywood Lane	NW Corner	Ramp is good	4	8/29/2012
Burlwood Lane / Cherrywood Lane	NE Corner	Ramp is good	4	8/29/2012
Cherrywood Lane / Rosewood Lane	NW Corner	Ramp is average and cracking	3	8/29/2012
Rosewood Lane / Wildwood Lane	SW Corner	Ramp is good	4	8/29/2012
Burlwood Lane / Wildwood Lane	NE Corner	Ramp is average and space between curb and sidewalk	3	8/29/2012
Crimson Clover Way / Auburn Meado	NE Corner	No ramp	1	8/29/2012
Crimson Clover Way / Auburn Meado	SE Corner	Ramp is good	4	8/29/2012

Crimson Clover Way / Auburn Meado	NW Corner	No ramp	1	8/29/2012
Crimson Clover Way / Auburn Meado	SW Corner	Ramp is good	4	8/29/2012
Crimson Clover Way / Primrose Lane	SE Corner	Ramp is good	4	8/29/2012
Crimson Clover Way / Primrose Lane	SW Corner	Ramp is average	3	8/29/2012
Poppyfield Place / Primrose Lane	NE Corner	Ramp is good	4	8/29/2012
Poppyfield Place / Primrose Lane	NW Corner	Ramp is average	3	8/29/2012
Poppyfield Place / Primrose Lane	SE Corner	No ramp	1	8/29/2012
Poppyfield Place / Primrose Lane	SW Corner	No ramp	1	8/29/2012
Poppyfield Place / Janice Drive	NE Corner	Ramp is good	4	8/29/2012
Poppyfield Place / Janice Drive	SE Corner	Ramp is good on Janice Dr. side, ramp is average on Poppyfield Place side	4&3	8/29/2012
Poppyfield Place / Janice Drive	NW Corner	Ramp is average on Janice Dr. side, ramp is bad on Poppyfield Place side	3&2	8/29/2012
Poppyfield Place / Janice Drive	SW Corner	Ramp is good on Janice Dr. side, ramp is average on Poppyfield Place side	4&3	8/29/2012
Auburn Meadow Lane / Janice Drive	NE Corner	Ramp is good	4	8/29/2012
Auburn Meadow Lane / Janice Drive	SE Corner	Ramp is good	4	8/29/2012
Auburn Meadow Lane / Janice Drive	SW Corner	Ramp is average	3	8/29/2012
Auburn Meadow Lane / Janice Drive	NW Corner	Ramp is good	4	8/29/2012
Auburn Meadow Lane / Bluebell Trail	NE Corner	Ramp is good	4	8/29/2012
Auburn Meadow Lane / Bluebell Trail	NW Corner	Ramp is good	4	8/29/2012
Poppyfield Place / Lily Lane	NE Corner	Ramp is good	4	8/29/2012
Poppyfield Place / Lily Lane	SE Corner	Ramp is average	3	8/29/2012
Ridge Field Run / Lily Lane	NW Corner	Ramp is average and cracking	3	8/29/2012
Ridge Field Run / Lily Lane	NE Corner	Ramp is average	3	8/29/2012
Ridge Field Run / Lily Court	SW Corner	Ramp is good	4	8/29/2012
Ridge Field Run / Lily Court	SE Corner	Ramp is good	4	8/29/2012
Marigold Place / Ridge Field Run	NE Corner	Ramp is good	4	8/29/2012
Marigold Place / Ridge Field Run	NW Corner	Ramp is good	4	8/29/2012
Janice Drive / Ridge Field Run	NW Corner	No ramp, it's a curb	1	8/29/2012
Janice Drive / Ridge Field Run	SW Corner	No ramp, it's a curb	1	8/29/2012
Ridge Field Run / Wildflower Way	NE Corner	Ramp is good	4	8/29/2012
Ridge Field Run / Wildflower Way	SE Corner	Ramp is good	4	8/29/2012
Ridge Field Run / Wildflower Way	NW Corner	No ramp	1	8/29/2012
Ridge Field Run / Wildflower Way	SW Corner	No ramp	1	8/29/2012
Wildflower Way / Silver Fern Lane	SW Corner	Ramp is good	4	8/29/2012
Wildflower Way / Silver Fern Lane	SE Corner	No ramp	1	8/29/2012
Wildflower Way / Silver Fern Lane	NW Corner	Ramp is good	4	8/29/2012
Wildflower Way / Golden Leaf Lane	SW Corner	Ramp is good	4	8/29/2012
Golden Leaf Lane / Estate Drive	NE Corner	Ramp is good	4	8/29/2012
Golden Leaf Lane / Estate Drive	SE Corner	No ramp	1	8/29/2012
Golden Leaf Lane / Estate Drive	NW Corner	Ramp is good	4	8/29/2012
Golden Leaf Lane / Winterberry Lane	SE Corner	Ramp is good	4	8/29/2012
Morningview Court / Winterberry Lar	NE Corner	Ramp is good	4	8/29/2012

Morningview Court / Winterberry Lane	SE Corner	Ramp is average and cracking	3	8/29/2012
Morningview Court / Winterberry Lane	SW Corner	No ramp	1	8/29/2012
Winterberry Lane / Silver Fern Lane	NE Corner	Ramp is good	4	8/29/2012
Winterberry Lane / Silver Fern Lane	NW Corner	No ramp	1	8/29/2012
Winterberry Lane / Silver Fern Lane	SE Corner	Ramp is good	4	8/29/2012
Silver Fern Lane / Hollyhock Lane	NW Corner	No ramp	1	8/29/2012
Silver Fern Lane / Hollyhock Lane	SW Corner	Ramp is average and cracked	3	8/29/2012
Silver Fern Lane / Hollyhock Lane	SE Corner	Ramp is good	4	8/29/2012
Hollyhock Lane / Winterberry Lane	NE Corner	Ramp is good	4	8/29/2012
Hollyhock Lane / Winterberry Lane	SE Corner	Ramp is good	4	8/29/2012
Wildflower Way / Winterberry Lane	NE Corner	Ramp is average and cracking	3	8/29/2012
Wildflower Way / Winterberry Lane	SE Corner	No ramp	1	8/29/2012
Wildflower Way / Winterberry Lane	SW Corner	No ramp	1	8/29/2012
Wildflower Way / Winterberry Lane	NW Corner	Ramp is good	4	8/29/2012
H. Parker Court / Wildflower Way	NE Corner	No ramp	1	8/29/2012
H. Parker Court / Wildflower Way	SE Corner	Ramp is good	4	8/29/2012
H. Parker Court / Wildflower Way	SW Corner	Ramp is good	4	8/29/2012
H. Parker Court / Wildflower Way	NW Corner	No ramp	1	8/29/2012
Robinhood Blvd. / 77th Ave.	NE Corner	Ramp is good	4	8/29/2012
Robinhood Blvd. / 77th Ave.	NW Corner	Ramp is good	4	8/29/2012
Summer Drive	Near 448 Summer Dr.	No ramp	1	8/29/2012
Summer Drive	Near 443 Summer Dr.	No ramp	1	8/29/2012
Starlight Drive / Summer Drive	SE Corner	Ramp is average	3	8/29/2012
Starlight Drive / Summer Drive	SW Corner	Ramp is average	3	8/29/2012
Starlight Drive	Near 2339 Starlight Drive	No ramp	1	8/29/2012
Starlight Drive	Near 2348 Starlight Drive	No ramp	1	8/29/2012
Starlight Drive / 77th Ave.	NE Corner	Ramp is average	3	8/29/2012
Springhill Court / Springhill Drive	NE Corner	Ramp is good	4	8/29/2012
Springhill Court / Springhill Drive	SE Corner	Ramp is good	4	8/29/2012
Springhill Drive / Stratford Lane	NW Corner	Ramp is good with truncated dome	5	8/29/2012
Springhill Drive / Stratford Lane	SW Corner	Ramp is good with truncated dome	5	8/29/2012
Canterbury Place / Stratford Lane	NE Corner	Ramp is good	4	8/29/2012
Canterbury Place / Stratford Lane	NW Corner	Ramp is good	4	8/29/2012
Canterbury Place / Oxford Circle	NW Corner	Ramp is good	4	8/29/2012
Canterbury Place / Oxford Circle	SW Corner	Ramp is good	4	8/29/2012
Stratford Lane	sides of 500/444 Stratford	Sidewalk ends and begins no curb ramp	1	8/29/2012
Stratford Lane / Victoria Road	NE Corner	Ramp is good	4	8/29/2012
Stratford Lane / Victoria Road	SE Corner	Ramp is good	4	8/29/2012
York Road	2534 York	Sidewalk ends / No ramp	1	8/29/2012
York Road	541 York	Sidewalk ends / No ramp	1	8/29/2012
York Road / Victoria Road	NE Corner	Ramp is good	4	8/29/2012

York Road / Victoria Road	NW Corner	Ramp is good	4	8/29/2012
York Road / Victoria Road	SW Corner	No ramp	1	8/29/2012
York Road / Victoria Road	SE Corner	No ramp	1	8/29/2012
York Road / Springhill Drive	NW Corner	Ramp is good	4	8/29/2012
York Road / Springhill Drive	NE Corner	No ramp	1	8/29/2012
York Road / Springhill Drive	SE Corner	No ramp	1	8/29/2012
York Road / Springhill Drive	SW Corner	Ramp is good	4	8/29/2012
Divac Drive	sides of 2187/2203 Divac	Sidewalk ends and begins no curb ramp	1	8/29/2012
Divac Drive / 76th Ave.	NE Corner	No ramp facing Divac, ramp is average facing 76th Ave.	1&3	8/29/2012
Divac Drive / 76th Ave.	SE Corner	No ramp facing Divac, ramp is average facing 76th Ave.	1&3	8/29/2012
Divac Drive / 77th Ave.	NE Corner	Ramp is good	4	8/29/2012
Divac Drive / 77th Ave.	NW Corner	Ramp is good	4	8/29/2012
Divac Drive / 77th Ave.	SE Corner	Ramp is average	3	8/29/2012
Divac Drive / 77th Ave.	SW Corner	Ramp is average	3	8/29/2012
Anna Street / 77th Ave.	NE Corner	No ramp	1	8/29/2012
Anna Street / 77th Ave.	NW Corner	No ramp	1	8/29/2012
Anna Street / 76th Ave.	NE Corner	Ramp is average, middle of sidewalk and ramp is popping up	3	8/29/2012
Anna Street / 76th Ave.	SW Corner	Ramp is average, middle of sidewalk and ramp is popping up	3	8/29/2012
Anna Street / 76th Ave.	NW Corner	Ramp is good	4	8/29/2012
Anna Street / 76th Ave.	SE Corner	Ramp is good	4	8/29/2012
Grand Avenue	sides between 2141/2206	Sidewalk ends and begins no curb ramp	1	8/29/2012
Grand Ave. / 76th Ave.	NE Corner	No ramp	1	8/29/2012
Grand Ave. / 76th Ave.	NW Corner	No ramp	1	8/29/2012
Grand Ave. / 76th Ave.	SW Corner	No ramp	1	8/29/2012
Grand Ave. / 76th Ave.	SE Corner	No ramp	1	8/29/2012
Grand Ave. / 76th Place	NE Corner	No ramp	1	8/29/2012
Grand Ave. / 76th Place	SE Corner	No ramp	1	8/29/2012
Grand Ave. / 77th Ave.	NE Corner	No ramp	1	8/29/2012
Grand Ave. / 77th Ave.	NW Corner	No ramp	1	8/29/2012
76th Place	East of 2325 on 76th Ave.	No ramp	1	8/29/2012
76th Ave.	East of 2233 on 76th Ave.	No ramp	1	8/29/2012
76th Ave.	East of 2229 on 76th Ave.	No ramp	1	8/29/2012
Lori Lane / 76th Ave.	NE Corner	No ramp	1	8/29/2012
Lori Lane / 76th Ave.	SE Corner	No ramp	1	8/29/2012
Lori Lane	2139 Lori Lane	No ramp, sidewalk ends	1	8/29/2012
77th Ave. / Naples Drive	SE Corner	Ramp is good	4	8/29/2012
77th Ave. / Naples Drive	SW Corner	Ramp is good	4	8/29/2012
77th Ave. / Capri Drive	SE Corner	No ramp	1	8/29/2012
Naples Drive / Sorrento Drive	SW Corner	No ramp	1	8/29/2012
Naples Drive / Sorrento Drive	NW Corner	No ramp	1	8/29/2012
Naples Drive / Sorrento Drive	SE Corner	Ramp is bad	2	8/29/2012

Naples Drive / Sorrento Drive	NE Corner	No ramp on Naples Dr. side, ramp is bad facing Sorrento Dr.	1&2	8/29/2012
Sorrento Drive / Venice Drive	SE Corner	Ramp is average	3	8/29/2012
Sorrento Drive / Venice Drive	SW Corner	No ramp	1	8/29/2012
Sorrento Drive / Venice Drive	NW Corner	No ramp	1	8/29/2012
Sorrento Drive	SW Corner	Ramp is good on corner of 2412 Sorrento Dr.	4	8/29/2012
Capri Drive	before 2424 Capri Dr.	No ramp beginning sidewalk	1	8/29/2012
Capri Drive / Sorrento Drive	NE Corner	No ramp	1	8/29/2012
Capri Drive / Sorrento Drive	NW Corner	No ramp	1	8/29/2012
Capri Drive / Sorrento Drive	SW Corner	No ramp	1	8/29/2012
Capri Drive / Venice Drive	NW Corner	Ramp is bad	2	8/29/2012
Capri Drive / Venice Drive	SW Corner	Ramp is average	3	8/29/2012
Venice Court / Venice Drive	SE Corner	No ramp	1	8/29/2012
Venice Court / Venice Drive	SW Corner	No ramp	1	8/29/2012
Naples Court / Naples Drive	NW Corner	Ramp is average	3	8/29/2012
Naples Court / Naples Drive	SW Corner	Ramp is average	3	8/29/2012
Naples Court / Naples Drive	SE Corner	Ramp is average	3	8/29/2012
Seville Court / Capri Drive	NE Corner	No ramp	1	8/29/2012
Seville Court / Capri Drive	SE Corner	No ramp	1	8/29/2012
Turin Drive / Capri Drive	NW Corner	Ramp is good with truncated dome	5	8/29/2012
Turin Drive / Capri Drive	NE Corner	No ramp	1	8/29/2012
Naples Drive / Capri Drive	NW Corner	Ramp is good with truncated dome facing Naples Dr., ramp is good facing Capri Dr.	5&4	8/29/2012
Naples Drive / Capri Drive	NE Corner	No ramp	1	8/29/2012
Genoa Court / Naples Drive	NW Corner	No ramp	1	8/29/2012
Genoa Court / Naples Drive	SW Corner	Ramp is good	4	8/29/2012
Genoa Court / Naples Drive	SE Corner	No ramp	1	8/29/2012
Roma Court / Capri Drive	NW Corner	No ramp	1	8/29/2012
Roma Court / Capri Drive	NE Corner	Ramp is good with truncated dome facing Roma Court, ramp is good facing Capri Dr.	5&4	8/29/2012
Sheila Drive / Big Sand Drive	NW Corner	No ramp	1	8/29/2012
Corbin Court / Big Sand Drive	SE Corner	Ramp is bad	2	8/29/2012
Corbin Court / Big Sand Drive	SW Corner	Ramp is average	3	8/29/2012
Big Sand Drive / Deer Run Drive	SE Corner	No ramp	1	8/29/2012
Big Sand Drive / Deer Run Drive	SW Corner	No ramp	1	8/29/2012
Red River Drive / 76th Ave.	NW Corner	No ramp	1	8/29/2012
Red River Drive / 76th Ave.	NE Corner	No ramp	1	8/29/2012
Red River Drive / 76th Ave.	SE Corner	No ramp	1	8/29/2012
Deer Run Drive / 76th Ave.	NW Corner	No ramp	1	8/29/2012
Anna Street / Lincoln Drive	NE Corner	No ramp	1	8/29/2012
Anna Street / Lincoln Drive	SE Corner	No ramp	1	8/29/2012
Trenta Court / Lincoln Drive	NW Corner	No ramp	1	8/29/2012
Anna Street / Parkway Drive	NW Corner	No ramp	1	8/29/2012
Anna Street / Parkway Drive	NE Corner	No ramp	1	8/29/2012

Anna Street / Parkway Drive	SE Corner	No ramp	1	8/29/2012
Anna Street / Parkway Drive	SW Corner	No ramp	1	8/29/2012
Parkway Drive	Northside of street	No ramp near creek	1	8/29/2012
Anna Street / Elizabeth Drive	NW Corner	No ramp	1	8/29/2012
Anna Street / Elizabeth Drive	NE Corner	No ramp	1	8/29/2012
Anna Street / Elizabeth Drive	SE Corner	No ramp	1	8/29/2012
Anna Street / Elizabeth Drive	SW Corner	No ramp	1	8/29/2012
Deerpath Drive West	North and South Side near	No ramp to begin sidewalk near Austin Ave. on Deerpath Drive West	1	8/29/2012
Deer Trail Lane / Deerpath Drive West	NW Corner near 210	Ramp is bad , sinking	2	8/29/2012
Deer Trail Lane / Deerpath Drive West	NE Corner near 225	Ramp is average	3	8/29/2012
Deer Trail Lane / Deerpath Drive West	SE Corner near 221	No ramp	1	8/29/2012
Deer Trail Lane / Deerpath Drive West	SW Corner near 2300	No ramp	1	8/29/2012
Deer Trail Lane / Deerpath Drive West	NW Corner near 315	Ramp is average	3	8/29/2012
Deer Trail Lane / Deerpath Drive West	NE Corner near 338	Ramp is average	3	8/29/2012
Deerpath Drive / Deerpath Drive West	SW Corner	Ramp is good	4	8/29/2012
Deerpath Drive / Deerpath Drive West	SE Corner	No ramp	1	8/29/2012
Deerpath Drive West	Corner near 343	No ramp to begin Sidewalk	1	8/29/2012
Deerpath Drive	West side of street near re	No ramp to end sidewalk before retention pond	1	8/29/2012
Deerpath Drive	East side of street near Lif	No ramp to end sidewalk before the lift station	1	8/29/2012
Barbara Jean Drive / Austin Ave.	NE Corner	Sidewalk ends with no ramp	1	8/29/2012
Barbara Jean Drive / Austin Ave.	SE Corner	Sidewalk ends with no ramp	1	8/29/2012
Meadow Ridge Drive	South side of street	Sidewalk begins with no ramp at 535 Meadow Ridge Drive	1	8/30/2012
Meadow Ridge Drive	North side of street	Sidewalk begins with no ramp at 540 Meadow Ridge Drive	1	8/30/2012
Meadow Ridge Drive / Redwing Place	NW Corner	Ramp is average with tactile surface, but seperating	3	8/30/2012
Meadow Ridge Drive / Redwing Place	NE Corner	Ramp is average with tactile surface, but seperating	3	8/30/2012
Meadow Ridge Drive / Redwing Place	SE Corner	No ramp	1	8/30/2012
Meadow Ridge Drive	North side of street	Sidewalk ends with no ramp at 436 Meadow Ridge Drive	1	8/30/2012
Sandpiper Drive	South side of street	Sidewalk ends with no ramp across from 434 Sandpiper Drive	1	8/30/2012
Sandpiper Drive / Redwing Place	SE Corner	Ramp is good	4	8/30/2012
Sandpiper Drive / Redwing Place	SW Corner	Ramp is average with tactile surface, but seperating	3	8/30/2012
Sandpiper Drive	North and South side of st	Sidewalk ends at dead end	1	8/30/2012
Homestead Drive	South side of street	Sidewalk begins with no ramp	1	8/30/2012
Homestead Drive / Jarrett Drive	NW Corner	No ramp	1	8/30/2012
Homestead Drive / Jarrett Drive	SW Corner	Ramp is average, sinking and seperating	3	8/30/2012
Hillside Drive / Jarrett Drive	SE Corner	Ramp is bad	2	8/30/2012
Jarrett Drive / Hilbrich Drive	North Corner	Ramp is good	4	8/30/2012
Maryann Court / Hilbrich Drive	NW Corner	Ramp is average, seperating	3	8/30/2012
Maryann Court / Hilbrich Drive	SW Corner	Ramp is average, seperating	3	8/30/2012
Hilbrich Drive / Hillside Drive	NE Corner	Ramp is average	3	8/30/2012
Hilbrich Drive / Hillside Drive	NW Corner	Ramp is average	3	8/30/2012
Sunnybrook Court / Hilbrich Drive	NE Corner	Ramp is good	4	8/30/2012

Sunnybrook Court / Hilbrich Drive	NW Corner	Ramp is average	3	8/30/2012
Hugel Hill Street / Lacebark Street	NW Corner	Ramp is bad, sinking	2	8/30/2012
Lacebark Street / Bristlecone Drive	SE Corner	Ramp is bad, sunk and cracked	2	8/30/2012
Lacebark Street / Bristlecone Drive	SW Corner	Ramp is average, sunk	3	8/30/2012
Lacebark Street / Bristlecone Drive	NW Corner	No ramp	1	8/30/2012
Lacebark Street	North side of street	Sidewalk begins with no ramp at 300 Lacebark	1	8/30/2012
Lacebark Street	South side of street	Sidewalk breaks on sides of 307 Lacebark with no ramps	1	8/30/2012
82nd Ave. / Balkan Drive	SE Corner	Ramp is average	3	8/30/2012
82nd Ave. / Balkan Drive	North side	Sidewalk ends with no ramp at 2830	1	8/30/2012
Balkan Drive	West side of street	Sidewalk breaks on sides of 2918 Balkan with no ramps	1	8/30/2012
Balkan Drive / Scotch Street	NW Corner	Ramp is good	4	8/30/2012
Balkan Drive / Scotch Street	SW Corner	Ramp is average	3	8/30/2012
Scotch Street / Bristlecone Drive	SE Corner	No ramp	1	8/30/2012
Scotch Street / Bristlecone Drive	NW Corner	Ramp is average	3	8/30/2012
Scotch Street / Bristlecone Drive	NE Corner	Ramp is average facing Bristlecone, ramp is bad and sinking facing Scotch Street	3&2	8/30/2012
Scotch Street	North and South sides of s	Sidewalk ends at dead end	1	8/30/2012
Manchester Lane / 81st Ave.	SE Corner	Ramp is bad	2	8/30/2012
Manchester Lane / 81st Ave.	SW Corner	No ramp	1	8/30/2012
Manchester Lane / 81st Ave.	NE Corner	No ramp	1	8/30/2012
Manchester Lane / 81st Ave.	NW Corner	No ramp	1	8/30/2012
Whisper Court / 81st Ave.	NE Corner	Ramp is good	4	8/30/2012
Whisper Court / 81st Ave.	NW Corner	Ramp is good	4	8/30/2012
Whisper Court / 81st Ave.	SW Corner	No ramp	1	8/30/2012
81st Ave.	North and South side of st	Sidewalks end at dead end	1	8/30/2012
Whisper Drive	West Side of street	No sidewalk on sides of 3106 Whisper Drive	1	8/30/2012
West Serenity Drive	South side of street	No sidewalk on sides of 15 West Serenity Lane	1	8/30/2012
West Serenity Drive	South side of street	Ramp is good and truncated on corner of 7 West Serenity Lane	5	8/30/2012
West Serenity Drive	North side of street	No sidewalk on sides of 6 and 2 West Serenity Lane	1	8/30/2012
West Serenity Drive	South side of street	Sidewalk ends at dead end	1	8/30/2012
82nd Ave. / Manchester Lane	NW Corner	Ramp is good	4	8/30/2012
82nd Ave. / Manchester Lane	SW Corner	No ramp	1	8/30/2012
Manchester Lane / Abby Lane	NE Corner	Ramp is average	3	8/30/2012
Manchester Lane / Abby Lane	SE Corner	Ramp is average	3	8/30/2012
Manchester Lane / Buckingham Lane	NW Corner	Ramp is average	3	8/30/2012
Manchester Lane / Buckingham Lane	SW Corner	Ramp is average	3	8/30/2012
Balkan Drive / Buckingham Lane	SE Corner	No ramp	1	8/30/2012
Balkan Drive / Buckingham Lane	NE Corner	Ramp is average	3	8/30/2012
Balkan Drive / Buckingham Lane	NW Corner	Ramp facing Balkan Dr. is average, ramp facing Buckingham is bad	3&2	8/30/2012
Buckingham Lane	North and South side of st	Sidewalks end at dead end	1	8/30/2012
Durham Lane / Wimbledon Drive	NE Corner	Ramp is good, beginning to separate	4	8/30/2012
Durham Lane / Wimbledon Drive	SE Corner	Ramp is good, beginning to separate	4	8/30/2012

Manchester Lane / Wimbledon Drive	NE Corner	Ramp is average	3	8/30/2012
Manchester Lane / Wimbledon Drive	SE Corner	Ramp facing Wimbledon Drive is bad	2	8/30/2012
Manchester Lane / Westbury Court	NE Corner	Ramp is average	3	8/30/2012
Manchester Lane / Westbury Court	SE corner	Ramp is bad	2	8/30/2012
Manchester Lane / Westbury Court	SW Corner	No ramp	1	8/30/2012
Manchester Lane / 85th Ave.	NE Corner	Ramp is good facing Manchester Lane	4	8/30/2012
Manchester Lane / 85th Ave.	NW Corner	Ramp is good facing Manchester Lane	4	8/30/2012
Normandy Road / Robin Hood Boulev	NE Corner	Ramp is average	3	8/30/2012
Normandy Road / Robin Hood Boulev	SE Corner	Ramp is good	4	8/30/2012
Normandy Road / Robin Hood Boulev	SW Corner	No ramp	1	8/30/2012
Elizabeth Drive / Normandy Road	NE Corner	Ramp is good	4	8/30/2012
Elizabeth Drive / Normandy Road	SE Corner	Ramp is good with truncated dome	5	8/30/2012
Normandy Road / St. Dunstan Drive	NW Corner	Ramp is good with truncated dome	5	8/30/2012
Normandy Road / St. Dunstan Drive	SW Corner	Ramp is good and truncated dome on St. Dunstan Drive side	5	8/30/2012
Robinhood Blvd. / St. Dunstand Drive	SW Corner	No ramp	1	8/30/2012
Robinhood Blvd. / St. Dunstand Drive	NE Corner	Ramp is good	4	8/30/2012
Robinhood Blvd. / St. Dunstand Drive	SE Corner	Ramp is average	3	8/30/2012
Normandy Road / Sir Gawaine Drive	NE Corner	No ramp	1	8/30/2012
Normandy Road / Sir Gawaine Drive	SE Corner	No ramp	1	8/30/2012
Normandy Road / Sir Gawaine Drive	NW Corner	Ramp is good with truncated dome	5	8/30/2012
Normandy Road / Sir Gawaine Drive	SW Corner	Ramp is good with truncated dome	5	8/30/2012
Robinhood Blvd. / Sir Gawaine Drive	NE Corner	Ramp is good	4	8/30/2012
Robinhood Blvd. / Sir Gawaine Drive	NW Corner	Ramp is good	4	8/30/2012
Robinhood Blvd. / Sir Gawaine Drive	SW Corner	Ramp is good	4	8/30/2012
Robinhood Blvd. / Sir Gawaine Drive	SE Corner	Ramp is good	4	8/30/2012
Normandy Road / Queen Eleanor Dri	NW Corner	No ramp	1	8/30/2012
Normandy Road / Queen Eleanor Dri	SW Corner	No ramp facing Normandy Road, Ramp is good facing Queen Eleanor Drive	1&4	8/30/2012
Normandy Road / King Henry Drive	NW Corner	Ramp is good with truncated dome	5	8/30/2012
Queen Eleanor Drive / King Henry Dri	NE Corner	No ramp	1	8/30/2012
Queen Eleanor Drive / King Henry Dri	SE Corner	No ramp	1	8/30/2012
Queen Eleanor Drive / King Henry Dri	NW Corner	No ramp	1	8/30/2012
Queen Eleanor Drive / King Henry Dri	SW Corner	Ramp is good with truncated dome	5	8/30/2012
Queen Eleanor Drive / Robinhood Blv	NE Corner	Ramp is good, storm drains in front	4	8/30/2012
Queen Eleanor Drive / Robinhood Blv	SE Corner	Ramp is good , storm drains in front	4	8/30/2012
Queen Eleanor Drive / Robinhood Blv	NW Corner	No ramp	1	8/30/2012
Springhill Drive / 77th Ave.	SW Corner	Ramp is good with truncated dome	5	8/30/2012
Springhill Drive / 77th Ave.	SE Corner	Ramp is good with truncated dome	5	8/30/2012
Kennedy Ave. / Little John Drive	SE Corner	No ramp	1	8/30/2012
Kennedy Ave. / Little John Drive	SW Corner	No ramp	1	8/30/2012
Kennedy Ave. / Little John Drive	NE Corner	No ramp	1	8/30/2012
Robinhood Blvd. / First Midwest Bank	SW Corner	Ramp is good	4	8/30/2012

Robinhood Blvd. / Peoples Bank Drive	SW Corner	Ramp is good	4	8/30/2012
Robinhood Blvd. / Little John Drive	NW Corner	Ramp is good	4	8/30/2012
Robinhood Blvd. / Little John Drive	SW Corner	Ramp is good	4	8/30/2012
Nottingham Lane / Robinhood Blvd.	NE Corner	No ramp	1	8/30/2012
Nottingham Lane / Robinhood Blvd.	SW Corner	Ramp is good	4	8/30/2012
Nottingham Lane / Robinhood Blvd.	NW Corner	Ramp is good	4	8/30/2012
Friar Tuck Drive / Robinhood Blvd.	NW Corner	Ramp is good	4	8/30/2012
Friar Tuck Drive / Robinhood Blvd.	NE Corner	Ramp is good	4	8/30/2012
Friar Tuck Drive / Robinhood Blvd.	SW Corner	Ramp is good	4	8/30/2012
Friar Tuck Drive / Robinhood Blvd.	SE Corner	Ramp is good	4	8/30/2012
Friar Tuck Drive / Sir Richard Road	NW Corner	Ramp is good	4	8/30/2012
Friar Tuck Drive / Sir Richard Road	NE Corner	No ramp	1	8/30/2012
Friar Tuck Drive / Sir Richard Road	SW Corner	Ramp is good	4	8/30/2012
Maid Marion North / Robinhood Blvd	NE Corner	No ramp	1	8/30/2012
Maid Marion North / Robinhood Blvd	NW Corner	Ramp is good	4	8/30/2012
Maid Marion North / Robinhood Blvd	SW Corner	Ramp is good	4	8/30/2012
Maid Marion South / Robinhood Blvd	NW Corner	Ramp is bad	2	8/30/2012
Maid Marion South / Robinhood Blvd	SW Corner	Ramp is good	4	8/30/2012
Bach Road / Turin Drive	NW Corner	No ramp	1	8/30/2012
Bach Road / Turin Drive	NE Corner	No ramp	1	8/30/2012
Bach Road / Turin Drive	SE Corner	No ramp	1	8/30/2012
Bach Road / Turin Drive	SW Corner	No ramp	1	8/30/2012
Hugel Hill Street / Turin Drive	NE Corner	No ramp	1	8/30/2012
Hugel Hill Street / Turin Drive	SE Corner	No ramp	1	8/30/2012
Hugel Hill Street / Turin Drive	NW Corner	Ramp is good	4	8/30/2012
Hugel Hill Street / Turin Drive	SW Corner	No ramp	1	8/30/2012
Hugel Hill Street / Tal Drive	SE Corner	No ramp	1	8/30/2012
Hugel Hill Street / Tal Drive	SW Corner	Ramp is good	4	8/30/2012
Hugel Hill Street / Tal Drive	NW Corner	Ramp is good with truncated dome	5	8/30/2012
Hugel Hill Street / Blick View Drive	SW Corner	No ramp	1	8/30/2012
Hugel Hill Street / Blick View Drive	NW Corner	Ramp is good with truncated dome	5	8/30/2012
Hilbrich Drive / Tal Drive	NE Corner	No ramp	1	8/30/2012
Hilbrich Drive / Tal Drive	NW Corner	No ramp	1	8/30/2012
Hilbrich Drive / Blick View Drive	SE Corner	No ramp	1	8/30/2012
Hilbrich Drive / Blick View Drive	SW Corner	No ramp	1	8/30/2012
Ridgely Street / Burge Drive	SW Corner	Ramp is bad	2	9/5/2012
Liberty Drive / Freedom Circle	NE Corner	Ramp is bad near 2907 Freedom Circle	2	9/5/2012
Liberty Drive / Freedom Circle	SE Corner	Ramp is bad near 2922 Freedom Circle	2	9/5/2012
Freedom Circle	NW Corner	Ramp is good near 2924 Freedom Circle	4	9/5/2012
Freedom Circle	SW Corner	Ramp is bad near 2954 Freedom Circle	2	9/5/2012
Liberty Drive / Freedom Circle	NE Corner	Ramp is bad near 2952 Freedom Circle	2	9/5/2012

Liberty Drive / Freedom Circle	SE Corner	Ramp is average near 2963 Freedom Circle	3	9/5/2012
Justice Drive / Burge Drive	NW Corner	Ramp is bad	2	9/5/2012
Justice Drive / Burge Drive	NE Corner	Ramp is average	3	9/5/2012
Justice Drive / Burge Drive	SE Corner	Ramp is average	3	9/5/2012
Justice Drive / Burge Drive	SW Corner	Ramp is bad	2	9/5/2012
Justice Drive / Liberty Drive	NW Corner	Ramp is good	4	9/5/2012
Justice Drive / Liberty Drive	NE Corner	No ramp	1	9/5/2012
Justice Drive / Liberty Drive	SE Corner	No ramp	1	9/5/2012
Justice Drive / Liberty Drive	SW Corner	Ramp is good facing Liberty Dr., ramp is average facing Justice Drive	4&3	9/5/2012
Flag Court / Liberty Drive	NE Corner	Ramp is bad facing Flag Ct., ramp is good facing Liberty Dr.	2&4	9/5/2012
Flag Court / Liberty Drive	SE Corner	Ramp is average	3	9/5/2012
Krame Drive / Burge Drive	NW Corner	Ramp is bad facing Krame Dr., ramp is good facing Burge Dr.	2&4	9/5/2012
Krame Drive / Burge Drive	SW Corner	Ramp is bad	2	9/5/2012
Liberty Drive / Union Circle	NE Corner	Ramp is bad facing Liberty Dr., No ramp facing Union Circle near 3101 Union Circle	2&1	9/5/2012
Liberty Drive / Union Circle	SE Corner	Ramp is bad facing Liberty Dr., No ramp facing Union Circle near 3112 Union Circle	2&1	9/5/2012
Union Circle	SW Corner	Ramp is bad facing North side of street, ramp is average facing E/W near 3114	2&3	9/5/2012
Union Circle	NW Corner	Ramp is good near 3142	4	9/5/2012
Liberty Drive / Union Circle	NE Corner	Ramp is good	4	9/5/2012
Liberty Drive / Union Circle	SE Corner	Ramp is good	4	9/5/2012
Liberty Drive / Union Circle	SW Corner	No ramp	1	9/5/2012
Burge Drive / 85th Ave.	NE Corner	No ramp	1	9/5/2012
Burge Drive / 85th Ave.	NW Corner	No ramp	1	9/5/2012
Liberty Drive / 85th Ave.	NE Corner	No ramp	1	9/5/2012
Liberty Drive / 85th Ave.	NW Corner	No ramp	1	9/5/2012
Pineview Lane	NW/SW Corners	No ramps at dead end	1	9/5/2012
Woodland Drive	NW/SW Corners	No ramps at dead end	1	9/5/2012
Woodland Drive / Pineview Lane	NW Corner	Ramp is good	4	9/5/2012
Woodland Drive / Pineview Lane	SW Corner	Ramp is average	3	9/5/2012
Pineview Lane / 91st Ave.	SW Corner	No ramp to begin sidewalk	1	9/5/2012
Pineview Lane / 91st Ave.	SE Corner	No ramp to begin sidewalk	1	9/5/2012
Matthews Street / 91st Ave.	SE Corner	Ramp is good facing Matthews Street	4	9/5/2012
Matthews Street / 92nd Ave.	NW Corner	No ramp that begins sidewalk near 5043 92nd Ave.	1	9/5/2012
93rd Court / Clark Place	NW Corner	Ramp is good facing Clark Pl., Ramp is bad facing 93rd Court	4&2	9/5/2012
93rd Terr. / Clark Place	NE Corner	Ramp is bad	2	9/5/2012
Clark Place / 92nd Ave.	SE Corner	Ramp is good with truncated dome facing Clark Pl., ramp is bad facing 92nd Ave.	5&2	9/5/2012
Clark Place / 92nd Ave.	SW Corner	Ramp is bad	2	9/5/2012
Clark Street / 92nd Ave.	NW Corner	Ramp is bad	2	9/5/2012
Clark Street / 92nd Ave.	SW Corner	Ramp is bad	2	9/5/2012
Mathews Street / 90th Lane	NE Corner	Ramp is average, cracked	3	9/5/2012
89th Terrace / Clark Place	NW Corner	Ramp is bad	2	9/5/2012
89th Terrace / Clark Place	SW Corner	Ramp is average	3	9/5/2012

89th Place / Clark Place	SW Corner	Ramp is average, cracked	3	9/5/2012
89th Place / Clark Place	NW Corner	Ramp is average, cracked	3	9/5/2012
89th Place / Porter	NE Corner	Ramp is good	4	9/5/2012
89th Place / Porter	NW Corner	Ramp is good	4	9/5/2012
89th Place	Corner	Ramp is average between 5030 and 4952 89th Place	3	9/5/2012
88th Court / Mathews Street	NE Corner	Ramp is average	4	9/5/2012
88th Court / Mathews Street	SE Corner	Ramp is average	4	9/5/2012
89th Place / Mathews Street	NE Corner	Ramp is bad	2	9/5/2012
89th Place / Mathews Street	SE Corner	Ramp is bad	2	9/5/2012
89th Court / Mathews Street	NE Corner	Ramp is average	3	9/5/2012
89th Court / Mathews Street	SE Corner	Ramp is good	4	9/5/2012
85th Place / Mathews Street	SE Corner	Ramp is good	4	9/5/2012
86th Place / Mathews Street	NE Corner	Ramp is bad	2	9/5/2012
86th Place / Mathews Street	SE Corner	Ramp is bad	2	9/5/2012
86th Place / Mathews Lane	SW Corner	Ramp is bad	2	9/5/2012
86th Place / Mathews Lane	SE Corner	Ramp is average	3	9/5/2012
86th Place / Clark Place	SW Corner	Ramp is average	3	9/5/2012
87th Place / Clark Place	NW Corner	Ramp is average	3	9/5/2012
87th Place / Clark Place	SW Corner	Ramp is average	3	9/5/2012
87th Lane / Clark Place	NW Corner	Ramp is average, cracked	3	9/5/2012
87th Lane / Clark Place	SW Corner	Ramp is bad, sinking	2	9/5/2012
87th Lane	Corner	Ramp is bad, cracked near 5098 87th Lane	2	9/5/2012
Mathews Street / 87th Lane	NE Corner	Ramp is bad	2	9/5/2012
Mathews Street / 87th Lane	SE Corner	Ramp is average	3	9/5/2012
Rohrman Road / Mockingbird Drive	NW Corner	Ramp is average	3	9/5/2012
Rohrman Road / Mockingbird Drive	NE Corner	No ramp	1	9/5/2012
Mockingbird Drive / Autumn Drive	NW Corner	Ramp is good	4	9/5/2012
Mockingbird Drive / Autumn Drive	NE Corner	Ramp is bad	2	9/5/2012
Mockingbird Drive / Painted Leaf Drive	NE Corner	No ramp	1	9/5/2012
Mockingbird Drive / Painted Leaf Drive	SE Corner	No ramp	1	9/5/2012
Mockingbird Drive / Painted Leaf Drive	NW Corner	No ramp	1	9/5/2012
Mockingbird Drive / Painted Leaf Drive	SW Corner	No ramp	1	9/5/2012
Mockingbird Drive / Acorn Court	SE Corner	No ramp facing Mockingbird Dr., ramp is average facing Acorn Ct.	1&3	9/5/2012
Mockingbird Drive / Acorn Court	SW Corner	No ramp facing Mockingbird Dr., ramp is average facing Acorn Ct.	1&3	9/5/2012
Acorn Court / Tanya Terrace	NE Corner	Ramp is bad	2	9/5/2012
Acorn Court / Tanya Terrace	NW Corner	Ramp is bad	2	9/5/2012
Mockingbird Drive / Morningside Drive	NW Corner	Ramp is bad	2	9/5/2012
Mockingbird Drive / Morningside Drive	SW Corner	Ramp is average facing Morningside Dr., No ramp facing Mockingbird Dr.	3&1	9/5/2012
Oak Leaf Court / Autumn Drive	NE Corner	Ramp is average and seperating facing Oak Leaf Ct., No ramp facing Autumn Dr.	3&1	9/5/2012
Oak Leaf Court / Autumn Drive	SE Corner	Ramp is average and seperatingfacing Oak Leaf Ct., No ramp facing Autumn Dr.	3&1	9/5/2012
Oak Leaf Court	Near Retention Pond	No ramps where sidewalk breaks	1	9/5/2012

Oak Leaf Drive / Painted Leaf Drive	NE Corner	No ramp	1	9/5/2012
Oak Leaf Drive / Painted Leaf Drive	SE Corner	No ramp	1	9/5/2012
Oak Leaf Drive / Painted Leaf Drive	NW Corner	No ramp	1	9/5/2012
Oak Leaf Drive / Morningside Drive	NW Corner	Ramp is average	3	9/5/2012
Oak Leaf Drive / Morningside Drive	SW Corner	Ramp is good facing Morningside Dr., Ramp is bad facing Oak Leaf Dr.	4&2	9/5/2012
Ridgely Street / Morningside Drive	NE Corner	Ramp is good facing Ridgely Street, No ramp facing Morningside Dr.	4&2	9/5/2012
Ridgely Street / Morningside Drive	SE Corner	No ramp	1	9/5/2012
Demeter Drive / Painted Leaf Drive	NE Corner	No ramp	1	9/5/2012
Demeter Drive / Painted Leaf Drive	SE Corner	No ramp	1	9/5/2012
Demeter Drive / Morningside Drive	NW Corner	No ramp	1	9/5/2012
Demeter Drive / Morningside Drive	SW Corner	No ramp	1	9/5/2012
Morningside Court / Morningside Drive	NE Corner	No ramp	1	9/5/2012
Morningside Court / Morningside Drive	NW Corner	No ramp	1	9/5/2012
Morningside Court / Morningside Drive	SW Corner	No ramp	1	9/5/2012
Painted Leaf Court / Painted Leaf Drive	NW Corner	No ramp	1	9/5/2012
Painted Leaf Court / Painted Leaf Drive	SW Corner	No ramp	1	9/5/2012
Painted Leaf Court	Near Retention Pond	No ramps where sidewalk breaks	1	9/5/2012
Woodview Drive / Harvest Drive	NW Corner	No ramp	1	9/5/2012
Woodview Drive / Harvest Drive	SE Corner	No ramp	1	9/5/2012
Woodview Drive / Harvest Drive	NE Corner	Ramp is good	4	9/5/2012
Woodview Drive / Harvest Drive	SW Corner	Ramp is good with truncated dome	5	9/5/2012
Grandview Court / Harvest Drive	NE Corner	No ramp	1	9/5/2012
Grandview Court / Harvest Drive	SE Corner	No ramp	1	9/5/2012
Acorn Drive	NW/SW Corners	No ramps at dead end	1	9/5/2012
Acorn Drive / Autumn Drive	NW Corner	Ramp is good	4	9/5/2012
Acorn Drive / Autumn Drive	SW Corner	No ramp	1	9/5/2012
Autumn Drive / Harvest Drive	NE Corner	No ramp	1	9/5/2012
Autumn Drive / Harvest Drive	NW Corner	No ramp	1	9/5/2012
Autumn Drive / Harvest Drive	SW Corner	Ramp is average	3	9/5/2012
Autumn Drive / Harvest Drive	SE Corner	Ramp is bad	2	9/5/2012
Harvest Drive / Harvest Court	NW Corner	Ramp is average	3	9/5/2012
Harvest Drive / Harvest Court	SW Corner	Ramp is average	3	9/5/2012
Harvest Drive / Harvest Court	SE Corner	No ramp	1	9/5/2012
Harvest Drive / Ceres Drive	NE Corner	No ramp	1	9/5/2012
Harvest Drive / Ceres Drive	SE Corner	No ramp	1	9/5/2012
Harvest Drive / Painted Leaf Drive	NE Corner	Ramp is good	4	9/5/2012
Harvest Drive / Painted Leaf Drive	NW Corner	Ramp is good	4	9/5/2012
Harvest Drive / Painted Leaf Drive	SE Corner	No ramp	1	9/5/2012
Harvest Drive / Painted Leaf Drive	SW Corner	No ramp	1	9/5/2012
Autumn Drive / Ceres Drive	SW Corner	Ramp is good with truncated dome facing Ceres Dr., No ramp facing Autumn Dr.	5&1	9/5/2012
Autumn Drive / Ceres Drive	SE Corner	No ramp	1	9/5/2012

Autumn Drive	Near Retention Pond	No ramps where sidewalk breaks	1	9/5/2012
Morningside Drive / Painted Leaf Drive	NW Corner	Ramp is good	4	9/5/2012
Morningside Drive / Painted Leaf Drive	SW Corner	Ramp is average	3	9/5/2012
Morningside Drive / Painted Leaf Drive	SE Corner	No ramp	1	9/5/2012
St. John Road / Lakeview Drive	NE Corner	Ramp is good with truncated dome	5	9/6/2012
St. John Road / Lakeview Drive	SE Corner	Ramp is good with truncated dome	5	9/6/2012
Lakeview Drive / Huppenthal Drive	NE Corner	No ramp	1	9/6/2012
Lakeview Drive / Huppenthal Drive	SE Corner	No ramp	1	9/6/2012
Lakeview Drive / Huppenthal Drive	SW Corner	No ramp	1	9/6/2012
Eggert Drive / Lakeview Drive	SE Corner	No ramp	1	9/6/2012
Eggert Drive / Lakeview Drive	SW Corner	No ramp	1	9/6/2012
Lakeview Drive	North/South of Lakeview	No ramp where sidewalk begins near 1230 and 1231 Lakeview Dr.	1	9/6/2012
Lakeview Court / Lakeview Drive	SE Corner	No ramp	1	9/6/2012
Lakeview Court / Lakeview Drive	SW Corner	No ramp	1	9/6/2012
Lantz Lane / Huppenthal Drive	NE Corner	No ramp	1	9/6/2012
Lantz Lane / Huppenthal Drive	SE Corner	No ramp	1	9/6/2012
Eggert Drive / Lantz Lane	NW Corner	Ramp is good	4	9/6/2012
Eggert Drive / Lantz Lane	SW Corner	Ramp is good	4	9/6/2012
Eggert Drive / McCoy Drive	NW Corner	No ramp	1	9/6/2012
Eggert Drive / McCoy Drive	SE Corner	No ramp	1	9/6/2012
McCoy Drive / Huppenthal Drive	NE Corner	Ramp is good with truncated dome	5	9/6/2012
McCoy Drive / Huppenthal Drive	SE Corner	No ramp	1	9/6/2012
Huppenthal Drive	East side of street	No ramp where sidewalk ends near Lakeview Park	1	9/6/2012
St. John Road / Huppenthal Drive	NE Corner	Ramp is good with truncated dome	5	9/6/2012
St. John Road / Huppenthal Drive	SE Corner	Ramp is good with truncated dome	5	9/6/2012
Patterson Street / Gates Drive	NE Corner	Ramp is good with truncated dome	5	9/6/2012
Patterson Street / Gates Drive	NW Corner	Ramp is good with truncated dome	5	9/6/2012
Gates Drive / Tate Drive	SE Corner	Ramp is good with truncated dome	5	9/6/2012
Gates Drive / Tate Drive	SW Corner	Ramp is good	4	9/6/2012
Augusta Boulevard / 77th Ave.	SE Corner	Ramp is good with truncated dome as entrance to Tara Park	5	9/6/2012
Patterson Street / Schillilng Drive	SW Corner	Ramp is good with truncated dome	5	9/6/2012
Patterson Street / Schillilng Drive	SE Corner	Ramp is good with truncated dome	5	9/6/2012
Patterson Street / Schillilng Drive	N Corner	Ramp is good with truncated dome	5	9/6/2012
Sunset Boulevard / Lakeview Drive	NW Corner	Ramp is good with tactile surface	4	9/6/2012
Sunset Boulevard / Lakeview Drive	SW Corner	Ramp is good with tactile surface	4	9/6/2012
Shady Lane / St. John Road	NW Corner	Ramp is good with truncated dome	5	9/6/2012
Shady Lane / St. John Road	SW Corner	Ramp is good with truncated dome	5	9/6/2012
Thornhill Drive / Castlevue Drive	NE Corner	Ramp is good	4	9/6/2012
Thornhill Drive / Castlevue Drive	SE Corner	Ramp is good	4	9/6/2012
Shady Lane / Castlevue Drive	SE Corner	Ramp is bad	2	9/6/2012
Thornhill Drive / St. John Road	NW Corner	Ramp is good with truncated dome	5	9/6/2012

Thornhill Drive / St. John Road	SW Corner	Ramp is good with truncated dome	5	9/6/2012
Farmdale Drive / Castlview Drive	NE Corner	Ramp is good with truncated dome	5	9/6/2012
Farmdale Drive / Castlview Drive	SE Corner	Ramp is good	4	9/6/2012
Farmdale Drive / St. John Road	NW Corner	Ramp is good with truncated dome	5	9/6/2012
Farmdale Drive / St. John Road	SW Corner	Ramp is good with truncated dome	5	9/6/2012
Tanglewood Drive / Castlview Drive	NE Corner	Ramp is good with truncated dome	5	9/6/2012
Tanglewood Drive / St. John Road	NW Corner	Ramp is good with truncated dome	5	9/6/2012
Tanglewood Drive / St. John Road	SW Corner	Ramp is good with truncated dome	5	9/6/2012
Tanglewood Drive / Coral Drive	SE Corner	Ramp is good with tactile surface facing Coral Dr., ramp is average facing Tanglewood	4&3	9/6/2012
Tanglewood Drive / Coral Drive	SW Corner	Ramp is good with tactile surface facing Coral Dr., ramp is average facing Tanglewood	4&3	9/6/2012
Coral Drive / Clover Lane	NE Corner	Ramp is good	4	9/6/2012
Coral Drive / Clover Lane	NW Corner	Ramp is good	4	9/6/2012
Coral Drive / Clover Lane	SE Corner	Ramp is good	4	9/6/2012
Coral Drive / Clover Lane	SW Corner	Ramp is good	4	9/6/2012
Rhett Court / Coral Drive	NE Corner	No ramp	1	9/6/2012
Rhett Court / Coral Drive	NW Corner	No ramp	1	9/6/2012
St. Francis Drive / Cynthia Court	NE Corner	No ramp	1	9/6/2012
St. Francis Drive / Cynthia Court	SE Corner	No ramp	1	9/6/2012
St. Francis Drive / Keenland Way	NE Corner	No ramp	1	9/6/2012
St. Francis Drive / Keenland Way	SE Corner	No ramp	1	9/6/2012
Augusta Boulevard / Churchill Drive	SE Corner	No ramp	1	9/6/2012
Augusta Boulevard / Churchill Drive	SW Corner	No ramp	1	9/6/2012
Keenland Way	Northside of street	Ramp is good with truncated dome as entrance to Kulik Park at 1424 Keenland	5	9/6/2012
Ridgemoor Drive / Keenland Way	NE Corner	No ramp	1	9/6/2012
Ridgemoor Drive / Keenland Way	SE Corner	No ramp	1	9/6/2012
Ridgemoor Drive / Patterson Street	NE Corner	Ramp is good with truncated dome	5	9/6/2012
Ridgemoor Drive / Patterson Street	SE Corner	Ramp is good with truncated dome	5	9/6/2012
Ridgemoor Drive / Patterson Street	NW Corner	Ramp is good with truncated dome	5	9/6/2012
Ridgemoor Drive / Patterson Street	SW Corner	Ramp is good with truncated dome	5	9/6/2012
Patterson Street / 77th Ave.	NE Corner	Ramp is good with truncated dome	5	9/6/2012
Patterson Street / 77th Ave.	NW Corner	Ramp is good with truncated dome	5	9/6/2012
Patterson Street / 77th Ave.	SW Corner	Ramp is good with truncated dome	5	9/6/2012
Patterson Street / 77th Ave.	SE Corner	Ramp is good with truncated dome	5	9/6/2012
Ticonderoga Street / 77th Ave.	NE Corner	No ramp	1	9/6/2012
Ticonderoga Street / 77th Ave.	NW Corner	No ramp	1	9/6/2012
Ticonderoga Street / Saratoga Ave.	NE Corner	No ramp	1	9/6/2012
Ticonderoga Street / Saratoga Ave.	SE Corner	No ramp	1	9/6/2012
Ticonderoga Street / Gates Drive	NE Corner	No ramp	1	9/6/2012
Ticonderoga Street / Gates Drive	NW Corner	Ramp is average	3	9/6/2012
Ticonderoga Street / Gates Drive	SW Corner	Ramp is average	3	9/6/2012
Oriskany Drive / Bemis Heights Ave.	NE Corner	Ramp is bad	2	9/6/2012

Oriskany Drive / Bemis Heights Ave.	NW Corner	Ramp is bad	2	9/6/2012
Saratoga Ave. / Bemis Heights Ave.	NW Corner	No ramp	1	9/6/2012
Saratoga Ave. / Bemis Heights Ave.	NE Corner	Ramp is good with truncated dome facing Bemis Heights, No ramp with truncated dome facing	5&1	9/6/2012
Oriskany Drive / Saratoga Ave.	NW Corner	No ramp	1	9/6/2012
Oriskany Drive / Saratoga Ave.	SW Corner	No ramp	1	9/6/2012
Balcarres Ave. / Saratoga Ave.	NE Corner	No ramp	1	9/6/2012
Bemis Heights Ave.	South side of street	No ramps on ends of sidewalk on sides of 1143 Bemis Heights Ave.	1	9/6/2012
Bemis Heights Ave. / Bennington Ave	South side / East Side of street	No ramps on ends of sidewalk on sides of 1119 Bemis Heights and 2533 Bennington Ave.	1	9/6/2012
Bennington Ave.	West Side of street	No ramps on ends of sidewalk on sides of 2524 and 2446 Bennington Ave.	1	9/6/2012
Balcarres Ave.	North side of street	No ramps on ends of sidewalk on sides of 2427 and 1126 Balcarres Ave.	1	9/6/2012
Balcarres Ave.	South side of street	No ramps on ends of sidewalk beginning at 2443 to corner	1	9/6/2012
Saratoga Ave.	South side of street	No ramps on ends of sidewalk on sides of 1027 Saratoga Ave.	1	9/6/2012
Maggie Mae Court / Burr Street	NE Corner	Ramp is good with truncated dome	5	9/7/2012
Maggie Mae Court / Burr Street	SE Corner	Ramp is good with truncated dome	5	9/7/2012
June Drive / Thiel Drive	SW Corner	Ramp is average, seperating and sinking	3	9/7/2012
June Drive / Thiel Drive	NW Corner	Ramp is average	3	9/7/2012
Thiel Drive / Keene Drive	NE Corner	Ramp is good facing Keene Dr., ramp is average facing Thiel Dr.	4&3	9/7/2012
Thiel Drive / Keene Drive	NW Corner	Ramp is good	4	9/7/2012
Cook Court / Slager Drive	SE Corner	Ramp is average, cracked	3	9/7/2012
Cook Court / Slager Drive	SW Corner	Ramp is average	3	9/7/2012
Thiel Drive / Cowan Court	NE Corner	Ramp is bad	2	9/7/2012
Thiel Drive / Cowan Court	SE Corner	Ramp is good	4	9/7/2012
Cowan Court / Poston Place	NW Corner	Ramp is bad, cracked, sinking	2	9/7/2012
Poston Place / Ticonderoga Street	NE Corner	Ramp is bad	2	9/7/2012
Poston Place / Ticonderoga Street	SE Corner	No ramp	1	9/7/2012
Poston Place / Ticonderoga Street	NW Corner	Ramp is average	3	9/7/2012
Poston Place / Ticonderoga Street	SW Corner	Ramp is bad	2	9/7/2012
Poston Place	South side of street	No ramp when sidewalk ends	1	9/7/2012
St. John Road / Poston Place	NE Corner	Ramp is good with truncated dome	5	9/7/2012
St. John Road / Poston Place	NW Corner	Ramp is good with truncated dome	5	9/7/2012
St. John Road / Poston Place	SE Corner	Ramp is good with truncated dome	5	9/7/2012
St. John Road / Poston Place	SW Corner	Ramp is good with truncated dome	5	9/7/2012
Amber Way / Anniston Lane	NE Corner	Ramp is good	4	9/7/2012
Amber Way / Anniston Lane	SE Corner	Ramp is good with truncated dome	5	9/7/2012
Victoria Place / Commerce Blvd.	SE Corner	Ramp is average	3	9/7/2012
Victoria Place / Commerce Blvd.	SW Corner	Ramp is good	4	9/7/2012
Victoria Place	South side of street	No ramp where sidewalk begins near 5480 Victoria Pl.	1	9/7/2012
Victoria Place	North Side of street	No ramp where sidewalk begins near 5533 Victoria Pl.	1	9/7/2012
Pine Island Drive	Near Trail	Ramp to Erie Lakawana Trail is good with truncated dome	5	9/7/2012
Cline Ave. / Seberger Road	NW Corner	Ramp is good with truncated dome	5	9/7/2012
Cline Ave. / Seberger Road	SW Corner	Ramp is good with truncated dome	5	9/7/2012

Cline Ave. / Rohrman Road	SE Corner	Ramp is good with truncated dome	5	9/7/2012
US 41	West Side of street	No ramp to end sidewalk near 610 US 41	1	9/12/2012
US 41	West Side of street	Ramps are good near 612 US 41 / Julies Auto Sales	4	9/12/2012
US 41 / Hart Farm Road	NW Corner	Ramp is good	4	9/12/2012
US 41 / Hart Farm Road	SW Corner	Ramp is good	4	9/12/2012
US 41	West Side of street	Ramps are good near 748 US 41	4	9/12/2012
US 41	East side of street	No ramp to end sidewalk near 677 US 41	1	9/12/2012
US 41	NE Corner	Ramp is good near 1001 US 41	4	9/12/2012
US 41	SE Corner	Ramp is good near 1005 US 41	4	9/12/2012
Willowbrook Drive / US 41	NW Corner	Ramp is good with truncated dome	5	9/12/2012
Willowbrook Drive / US 41	SW Corner	Ramp is good with truncated dome	5	9/12/2012
US 41	East side of street	Ramps are good with truncated domes across from Willowbrook Drive	5	9/12/2012
US 41	East side of street	Ramps are good with truncated domes between 1049 and 1133 US 41	5	9/12/2012
Deer Creek Drive / US 41	NW Corner	Ramp is good with truncated dome	5	9/12/2012
Deer Creek Drive / US 41	SW Corner	Ramp is good with truncated dome	5	9/12/2012
US 41 / 65th Ave.	NE Corner	Ramp is good with truncated dome	5	9/12/2012
US 41 / 65th Ave.	SE Corner	Ramp is good with truncated dome	5	9/12/2012
US 41	East side of street	Ramps are good with truncated domes near 1233 US 41	5	9/12/2012
US 41	East side of street	Ramps are good with truncated domes near 1349 US 41	5	9/12/2012
Parker Place / US 41	NW Corner	Ramp is good with truncated dome	5	9/12/2012
Parker Place / US 41	SW Corner	Ramp is good with truncated dome	5	9/12/2012
67th Ave. / US 41	NE Corner	Ramp is good with truncated dome	5	9/12/2012
67th Ave. / US 41	SE Corner	Ramp is good with truncated dome	5	9/12/2012
US 41	East side of street	Ramps are good with truncated domes at entrance to parking lot	5	9/12/2012
US 41	West Side of street	No ramp to begin sidewalk near 1500 US 41	1	9/12/2012
US 41	East side of street	No ramp to begin sidewalk near 1535 US 41	1	9/12/2012
US 41	East side of street	No ramp to begin sidewalk near 1855 US 41	1	9/12/2012
US 41	East side of street	Ramp is good with truncated dome near 1855 US 41	5	9/12/2012
US 41	East side of street	Ramps are good with truncated domes near 1901 US 41	5	9/12/2012
Schultz Drive / US 41	NE Corner	Ramp is good with truncated dome	5	9/12/2012
Schultz Drive / US 41	SE Corner	Ramp is good with truncated dome	5	9/12/2012
US 41	East side of street	Ramps (8) are good with truncated domes from 1951 to 2101 US 41	5	9/12/2012
US 41	West Side of street	No ramp to begin sidewalk at 1904/1910 US 41	1	9/12/2012
US 41	West Side of street	Ramps (15) are good with truncated domes from 1910 to 2100 US 41	5	9/12/2012
Moraine Trace / US 41	NE Corner	Ramp is good with truncated dome	5	9/12/2012
Moraine Trace / US 41	SE Corner	Ramp is good with truncated dome	5	9/12/2012
US 41	East side of street	Ramps (4) are good with truncated domes from 2121 to 2171 US 41	5	9/12/2012
Oakside Drive / US 41	NE Corner	Ramp is good with truncated dome	5	9/12/2012
Oakside Drive / US 41	SE Corner	Ramp is good with truncated dome	5	9/12/2012
US 41	East side of street	Ramps (10) are good with truncated domes from 2211 to 2333 US 41	5	9/12/2012
Sherwood Lake Drive / US 41	NW Corner	Ramp is good with truncated dome	5	9/12/2012

Sherwood Lake Drive / US 41	SW Corner	Ramp is good with truncated dome	5	9/12/2012
US 41	West Side of street	Ramps (17) are good with truncated domes from 2142 to 2338 US 41	5	9/12/2012
77th Ave. / US 41	NE Corner	Ramp is good with truncated dome	5	9/12/2012
77th Ave. / US 41	SE Corner	Ramp is good with truncated dome	5	9/12/2012
77th Ave. / US 41	SW Corner	Ramp is good with truncated dome	5	9/12/2012
77th Ave. / US 41	NW Corner	Ramp is good with truncated dome	5	9/12/2012
77th Ave.	North side of street	Ramp is good with truncated dome near entrance to Speedway	5	9/12/2012
77th Ave.	South side of street	Ramp is good with truncated dome near entrance to Leep's	5	9/12/2012
US 41	East side of street	Ramp is good with truncated dome at 7701 US 41	5	9/12/2012
US 41	West Side of street	Ramp is good with truncated dome at 2424 US 41	5	9/12/2012
78th Court	North Side of street	No ramp to begin sidewalk at 11412 78th Court	1	9/12/2012
78th Court	South side of stree	No ramp to begin sidewalk at 11421 78th Court	1	9/12/2012
Eagle Ridge Drive	West Side of street	No ramp to end sidewalk near 1350 Eagle Ridge Drive (Safety Village)	1	9/18/2012
Parker Place / Eagle Ridge Drive	NE Corner	Ramp is good	4	9/18/2012
Parker Place / Eagle Ridge Drive	NW Corner	Ramp is good	4	9/18/2012
Parker Place / Eagle Ridge Drive	SW Corner	Ramp is good	4	9/18/2012
Eagle Ridge Drive	West Side of street	Ramps (2) are good near 1400 Eagle Ridge Drive (Showplace 12)	4	9/18/2012
Eagle Ridge Drive	West Side of street	No ramps on sides of empty lot near 1500 Eagle Ridge Drive	1	9/18/2012
Caroline Ave. / Eagle Ridge Drive	NW Corner	Ramp is good with truncated dome	5	9/18/2012
Caroline Ave.	North side of street	Ramps (2) are good near 1050 Caroline Ave.	4	9/18/2012
Caroline Ave. / Fountain Park Dr.	NE Corner	Ramp is good	4	9/18/2012
Caroline Ave. / Fountain Park Dr.	NW Corner	Ramp is good	4	9/18/2012
Tompkins Court	East side of street	No ramp that ends the sidewalk after 6939 Tompkins Court	1	9/18/2012
Tompkins Court	West Side of street	Ramp is good near 6926 Tompkins Court	4	9/18/2012
Tompkins Court	West Side of street	Ramp is average but sinking near 6936 Tompkins Court	4	9/18/2012
Anthony Court / Tompkins Court	NE Corner	Ramp is good	4	9/18/2012
Anthony Court / Tompkins Court	SE Corner	Ramp is good	4	9/18/2012
Tompkins Court / Hwy. 330	NE Corner	Ramp is good	4	9/18/2012
Tompkins Court / Hwy. 330	NW Corner	Ramp is good	4	9/18/2012
Tompkins Court / Hwy. 330	SE Corner	No ramp	1	9/18/2012
Tompkins Court / Hwy. 330	SW Corner	No ramp	1	9/18/2012

APPENDIX B

TOWN OF SCHERERVILLE BUILDING REPORT

Building	Signage	Toilets	Urinals	Sinks	Drinking Fountain	Service Windows	Accessible Route	Parking Spots
Redar Park	Compliant	Compliant	Compliant	Compliant	Compliant	Compliant	Compliant	Compliant
Rohrman Park Restroom	Non-Compliant	Non-Compliant	Non-Compliant	Non-Compliant	Compliant	N/A	Compliant	Compliant
Plum Creek Park Restroom	Non-Compliant	Non-Compliant	Non-Compliant	Non-Compliant	N/A	N/A	Compliant	N/A
Stephen Park Restroom	Non-Compliant	Non-Compliant	Non-Compliant	Non-Compliant	Compliant	Non-Compliant	Compliant	Non-Compliant
Rohrman Park Building	Non-Compliant	Non-Compliant	N/A	Non-Compliant	N/A	Compliant	Compliant	Non-Compliant
Police Department	Compliant	Compliant	Compliant	Compliant	Compliant	Compliant	Compliant	Compliant
Town Hall	Non-Compliant	Compliant	Compliant	Compliant	Compliant	Compliant	Compliant	Compliant
Court	Compliant	Compliant	Compliant	Compliant	Compliant	Compliant	Compliant	Compliant
Public Works	Non-Compliant	Compliant	Compliant	Compliant	Non-Compliant	Compliant	Compliant	Non-Compliant

APPENDIX C

TOWN OF SCHERERVILLE OUTDOOR PARK FACILITIES REPORT

ADA PARK FACILITY REPORT

Park	Accessible Route	Baseball Fields (lighted)	Basketball Court	Concession Building	Drinking Fountain	Gazebo	Grill	Group Camping	Office	Outdoor Chess Area	Parking Lot	Paved Trail	Picnic Tables	Playground	Rest Area	Restroom	Shelter	Softball Field	Softball Field (lighted)	Tennis Court	Notes		
Autumn Creek	Y				Y								N	Y			1						
Biedron	N*				N								N	N			1			N		*lacking sidewalk & connections	
Elm Ridge	Y				Y		N						N	Y			1						
Erie-Lackawanna Trail	Y										Y	Y		Y			1						
Foxrun	Y				Y									Y									
Foxwood North	Y				Y								N	Y			1			Y			
Foxwood South	Y				Y								N	Y			1			2			
Grimmer	Y													Y									
Grove	Y												N				1						
Kulik	Y				Y	N								Y									
Lake of the Meadows	Y				Y									Y									
Novo Selo	Y*				Y							Y	N	Y			1					*some rubber ramp tiles to play areas are missing	
Penny Greenway	Y																						
Perry Ferrini Dog Park	N*													Y								*construction not completed	
Plum Creek	Y		N		Y		N					Y	N	Y		N	1	N		Y			
Prairie Estates	Y				Y						Y			Y									
Redar	Y		Y		Y		N				Y		N	Y		Y	1	Y					
Rolling Hills	N*											Y	N	Y		1	1	N				*missing sidewalk & connection to playground	
Rohrman	Y	Y		Y*	Y			Y*			Y**	Y	N	Y	Y	N	1	Y				*serving window counter not in compliance	
																						**spaces need remarking, signs	
Saratoga	Y													Y									
Scherwood	Y				Y		Y	Y		Y	Y*	Y	Y	Y			Y					*space missing sign	
Smith	N*													Y								*missing sidewalk & connection to playground	
Stephen	Y			Y*	Y					Y**	Y**	Y	N	Y		N	1	N	Y			*serving window counter not in compliance	
Tara	Y													Y								**spaces need remarking, signs	
Trace	Y													Y			1						
Other							*						*	Y									lacking ADA accessible grills & picnic tables

APPENDIX D

TOWN OF SCHERERVILLE PUBLIC OUTREACH

cational programs such as the Enviro-mobile and the Re-Use Room. They also provide field trips, summer programs, professional develop-

rium. It is a pleasure to serve as your councilman. Please contact me at jtipppy@scherville.org with any questions or comments.

ADA Notice to Town of Schererville

By Tom Thiel

The Town of Schererville is currently in the process of creating its Americans with Disabilities Act (Title II) Transition Plan. You can find the ADA Accommodation Form and the ADA Complaint Form on the town's website, www.schererville.org, or at

the Schererville Town Hall at 10 E. Joliet Street. If you have any questions in regards to the Americans with Disabilities Act, the Accommodation Form, or the Complaint Form please send an email to ada@scherville.org.

food to Porter and Lake County families in need. The pantry's mission is to help reduce the number of family pets surrendered to animal shelters due to lack of food and keep families and their pets together.

Currently the pantry gives approximately 2500 lbs of pet food to pet owners in need in Porter and Lake Counties. In Lake County, pet food is available at the following township trustee offices:

- St John Township Trustee, 1212 Lincoln Hwy., Schererville
- North Township Trustee, 5947 Hohman, Hammond
- Cedar Creek Township Trustee, 151 Fremont, Lowell

years old, be a resident of the ship, provide a valid IN drivers state ID and show proof of in-

It is always a challenge the pantry stocked, and do are always welcome! Done items must be new, not oper not expired. Items needed dog and cat food, dog b treats, cat treats, re-sealabk bags (gallon, quart size), leashes, bowls, toys, pet fo pons and plastic shopping. Checks can be mailed to: B dies Pet Pantry P.O. B Chesterton IN 46304. All d are tax-deductible!

Donations can be dropp any of the donation boxes County. You will find them : Feed & Supply, Smith Anim Oak Hill Animal Clinic, Munst Hospital, St John Animal Cli gry Hound Boutique & Groom Town Hall, Alsip Home & Nurs in Highland and Petco in Me

For more info www.bestbuddiespetpantry.com contact Cheryl Plom bestbuddiespetpantry@yahoo.com Also on facebook.

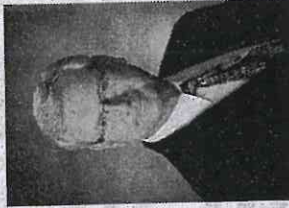


Chicago and Northwest Indiana Locations

PAULETTE YOUNG
Insurance Relations Manager
paulette.young@riverdalebodyshop.com

2500 Indianapolis Blvd.
Schererville, IN 46375
(219) 365-9886 Corp.
(219) 365-9210 Fax

www.riverdalebodyshop.com



STATE FARM



JIM MISKOVICH, Agent
6629 US Hwy. 30, Suite 8
"Harvest Centre", P.O. Box 1
Schererville, IN 46375
219.322.ASAP (2727)

"Providing Insurance & Financial Services"

Schererville Parks Dept.
Continued from page 8

zons. During the months of June, July, and August our students will learn how to draw and design.

Submitted by Dyer-Schererville Branch, Lake County Public Library

Library Programs



Support the American Red Cross.

Donate Now



Click to View

nwl.com News Sports Business Opinion Entertainment Calendar Obitis More

Join the conversation Log In Register Subscribe



47°

Cloudy

Weekly Forecast

sponsored by

Advanced Search | Privacy | About Our Ads

News

Web Search powered by YAHOO! SEARCH

Community News Government Schools Sports Entertainment Community Links Photos/Videos Get It

S'ville creating ADA transition plan; meeting slated Nov. 27

Recommend 0

0

0

Print

Email

November 19, 2012 12:05 am Times Staff

(0) Comments

SCHERERVILLE | Town officials are creating Schererville's Americans with Disabilities Act transition plan.

Schererville is asking residents to identify deficiencies and problems areas involving town-owned buildings, facilities, services and activities.

Suggestions and comments can be provided during a meeting from 6 to 8 p.m. Nov. 27 at Town Hall, 10 E. Joliet St.

People unable to attend can provide comments in advance by sending them to Thomas Thiel at ada@schererville.org or by calling (219) 322-2211.

Comments also can be mailed to ADA Coordinator, 10 E. Joliet St., Schererville, IN, 46375.

Tags Schererville, Americans With Disabilities Act, Meeting, Local News

View (0) Comments

More Schererville News Stories

Campagna Academy announces partnership with WorkOne



Deer Creek hosts Fall Frenzy

Campagna Academy awarded \$2,900 from Crown Point Community Foundation

Lake Central trustees award high school construction contracts

T THEATRE AT THE CENTER
A Special Holiday Edition
NOV. 15 - DEC. 23
GET YOUR TICKETS TODAY!
 > [click here](#)

Forever PLAID
 Plaid Tidings

Book by Stuart Ross
 Music and Lyrics by James Rott, Brad Ellis, Raymond Berg and David Snyder
 Directed by William Pullina

It Pays to Buy Local.

[CLICK TO VIEW SITE](#)

About Schererville

Town of Schererville
10 E. Joliet Street Schererville, IN 46375
219.322.2211
219.865.5515 (Fax)

Police Department
25 East Joliet Street Schererville, IN 46375
219.322.5000
Fax: 219.865.5529

Fire Department
1650 Cline Avenue Schererville, IN 46375
219.322.2599
Fax: 219.865.5506

Parks and Recreation
Office in Rohrman Park
219.865.5530
219.865.5534 (Fax)

Lake Central School Corporation
Kay Trapp Administration Center
8260 Wicker Avenue
St. John, Indiana 46373
Phone: 219.365.8507

Connect With Us



Email a story



Submit a photo

Recommendations

Griffith's demotion of police chief was long overdue

Sponsored Links



TOWN OF SCHERERVILLE

ADMINISTRATIVE OFFICES

THOMAS J. SCHMITT, TOWN COUNCIL PRESIDENT
ROB GUETZLOFF, UTILITY BOARD PRESIDENT
MICHAEL TROXELL, REDEVELOPMENT COMM. PRESIDENT
ROB GUETZLOFF, WATERWORKS BOARD PRESIDENT
HAROLD SLAGER, COUNCIL MEMBER
JERRY TIPPY, COUNCIL MEMBER
PHONE (219) 322-2211
FAX (219) 865-5515

10 EAST JOLIET STREET • SCHERERVILLE, IN 46375
JANICE M. MALINOWSKI
CLERK-TREASURER
PHONE (219) 322-2211
FAX (219) 865-5572

NEWS RELEASE

The Town of Schererville is currently in the process of creating its Americans with Disabilities Act Transition Plan and will be holding a Public Input Meeting on November 27th at the Schererville Town Hall, 10 E. Joliet Street.

The Town of Schererville would like your input in identifying deficiencies and/or problems areas of the Town owned buildings, facilities, services, and activities, as well as the Town's controlled right-of-ways. Suggestions and comments for those who cannot attend can be forwarded to Thomas Thiel, ADA Coordinator, preferably via email at ada@schererville.org or by phone at 219-322-2211. You may also send comments or suggestions by mail to: ADA Coordinator, 10 E. Joliet Street, Schererville, IN, 46375. Any suggestions or comments should be received by November 27th.

The Town of Schererville appreciates your efforts and thanks you in advance for your contributions to the Town of Schererville Transition Plan.

If special accommodations and needs are required please contact the ADA Coordinator by November 20th.